

# Special Town Meeting

June 30, 2014



## Presentation on Northeast Energy Direct Project

**Richard Hewitt, Homeowner**  
**Al Futterman, Nashua River Watershed Association**  
**Jim O'Reilly, Northeast Energy Efficiency Partnerships**

# Background

---

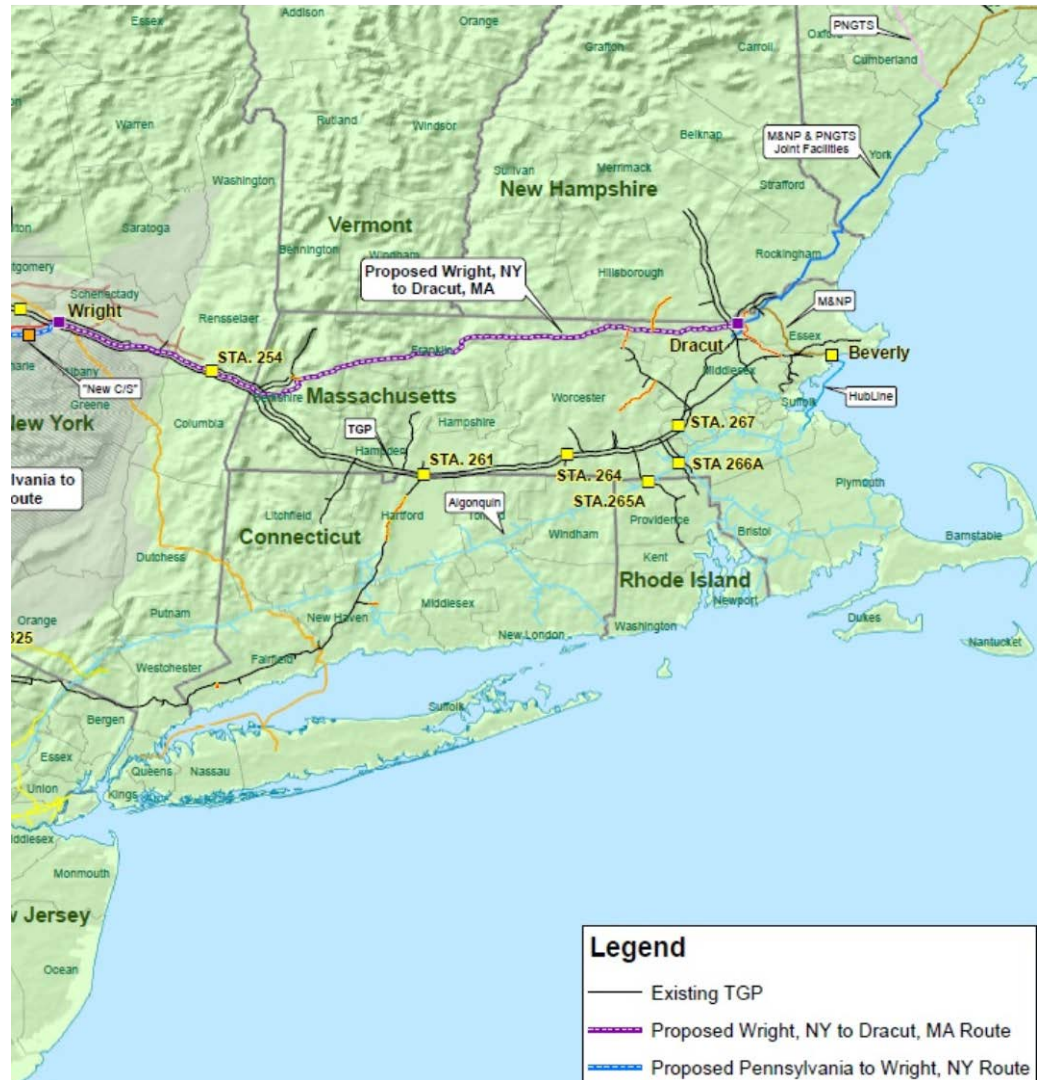
New England States Committee on Electricity (NESCOE) seeks to increase region's gas capacity to

- Mitigate peak season electricity rate spikes
- Ensure grid reliability during peak season usage
- Ensure region is not competitively disadvantaged

The proposed TGP Northeast Energy Direct is one potential solution to addressing this concern

# TGP Energy Direct Overview

- Tennessee Gas Pipeline (TGP), a subsidiary of Kinder Morgan, is proposing to install a 250-mile long buried 30- to 36-inch diameter high-pressure gas pipeline across 45 MA towns.
- Includes meter stations, compressor stations and above ground valves.
- Addition of six lateral lines off the mainline route



# Process and Timeline

---

- Kinder Morgan is surveying the proposed route – a necessary step to FERC filing
- KM plans to do a pre-filing with FERC in October 2014 , which is aimed to identify and remedy issues related to pipeline siting, environmental impact etc.
- Following FERC's issuance of Environmental Impact Statement, FERC will issue an order of construction.
- KM is aiming for FERC approval Nov 2016 and would start construction Jan 2017
- Pipeline operational late 2018

Estimated Project Schedule

Action	Timing
Outreach Meetings	Ongoing
Route Selection and Permit Preparation	Ongoing
Agency Consultations	Ongoing
File for FERC pre-filing	October 2014
KM Open Houses	November – December 2014
FERC Scoping Meetings	January – February 2015
FERC filing	August 2015
Anticipated FERC approval	November 2016
Proposed Start of Construction Activity	January 2017
Proposed In-Service	November 2018

# Towns affected

---

## Preliminary Northeast Expansion Project Town List

### **Berkshire County**

- Dalton, MA
- Hinsdale, MA
- Lenox, MA
- Peru, MA
- Pittsfield, MA
- Richmond, MA
- Washington, MA
- Windsor, MA

### **Essex County**

- Andover, MA
- Lynnfield, MA
- Methuen, MA

### **Franklin County**

- Ashfield, MA
- Conway, MA
- Deerfield, MA
- Erving, MA

- Greenfield, MA
- Montague, MA
- Northfield, MA
- Orange, MA
- Shelburne, MA
- Warwick, MA

### **Hampshire County**

- Plainfield, MA

### **Middlesex County**

- Ashby, MA
- Dracut, MA
- Dunstable, MA
- Groton, MA
- Lowell, MA
- North Reading, MA
- Pepperell, MA
- Tewksbury, MA
- Townsend, MA

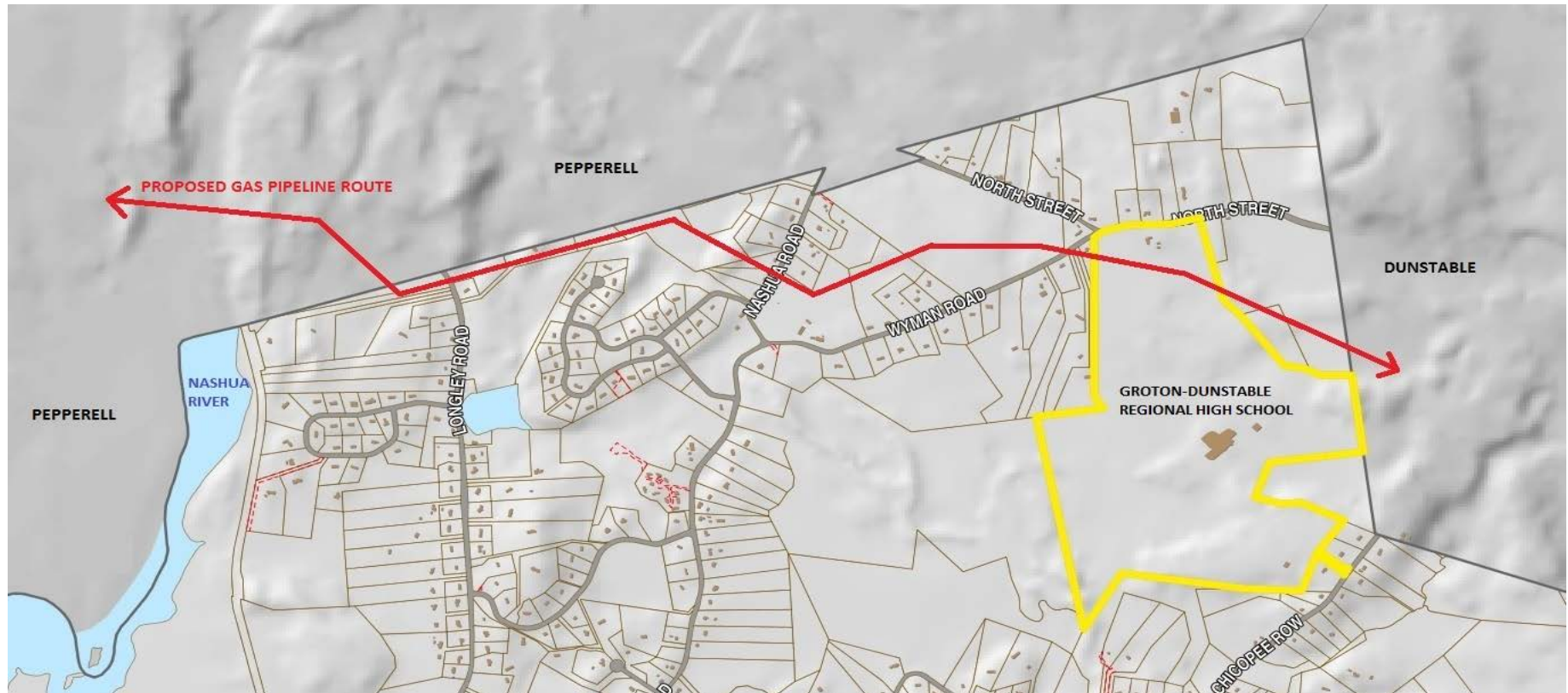
- Tyngsborough, MA
- Wilmington, MA

### **Worcester County**

- Ashburnham, MA
- Athol, MA
- Berlin, MA
- Bolton, MA
- Boylston, MA
- Gardner, MA
- Lunenburg, MA
- Northborough, MA
- Royalston, MA
- Shrewsbury, MA
- Winchendon, MA
- Worcester, MA



# Proposed Pipeline Route Through Groton



# Pipeline Construction

---



- 100' clear cut during construction
- 50' permanent easement scar maintained by mowing, possibly herbicides



## How we are affected – *Permanently altered land*



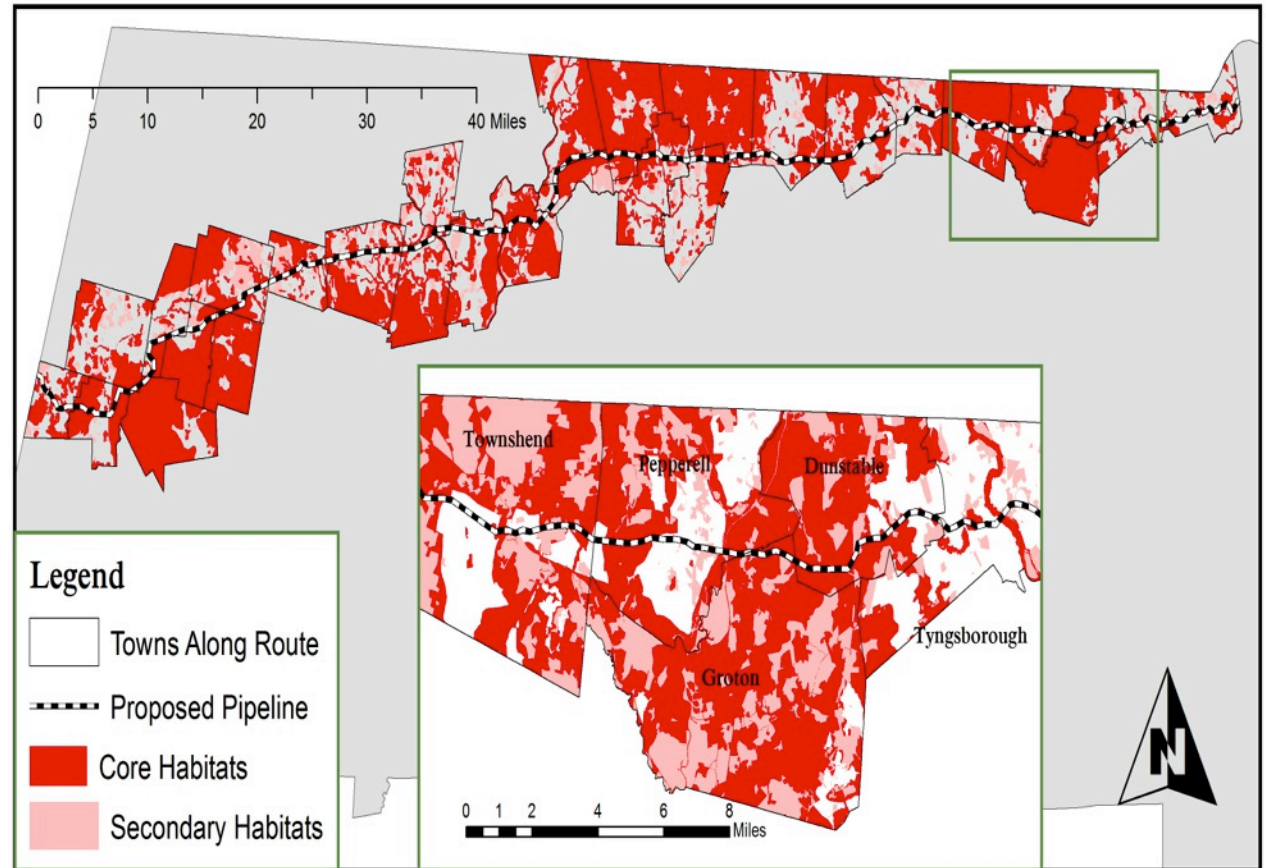
Dracut pipeline construction and easement



# Habitats affected\*

## Statewide Impact:

- 72 miles core wildlife habitat
- 32 miles of secondary wildlife habitat

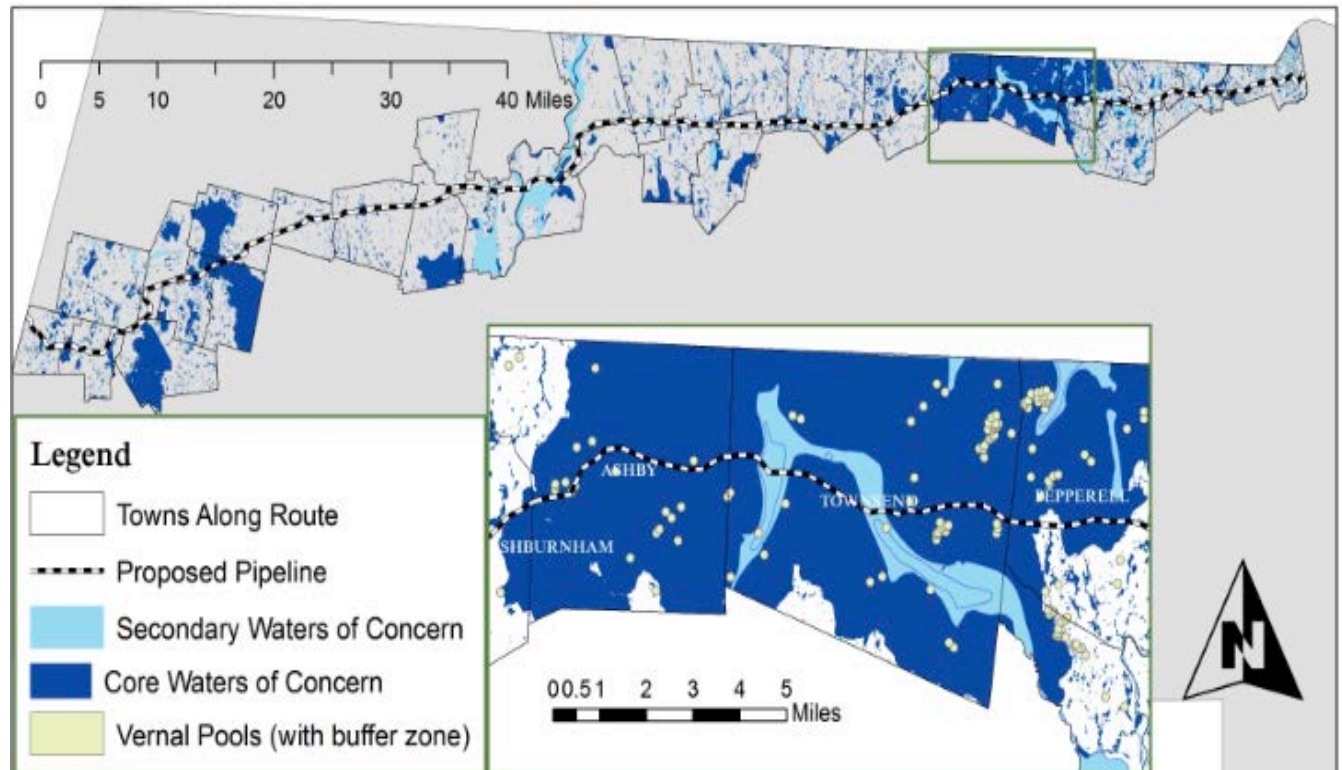


\*Excludes laterals

# Water resources affected\*

Statewide Impact:

- 206 wetlands
- 15 outstanding water resources



\*Excludes laterals

## How we are affected - *We may pay for the pipeline*

---

“...the **New England States Committee on Electricity**, whose members are appointed by the region’s six governors, **wants a tax to fund pipeline construction.**

- By ALISON SIDER , Wall Street Journal, April 27, 2014 7:24 p.m. ET

The IGER concept referenced in the above diagram was proposed by National Grid, UIL and Northeast Utilities, and may be a possible model for administering the new gas infrastructure and the allocation of costs

## How we are affected - *Eminent Domain*

---

Section 7(h) of the Natural Gas Act (NGA) grants the right of eminent domain when a certificate of public convenience and necessity is issued by the Commission under section 7(c) of the NGA.

Thus, when the Commission finds that a proposed project is in the public convenience and necessity, **the pipeline company has the right to acquire the property for that project by eminent domain** if the pipeline cannot acquire the necessary land through a negotiated easement or where the landowner and the pipeline cannot agree on the compensation to be paid for the land.

- FERC

Federal law regarding natural gas pipelines usurps state and local laws regarding land use and protection



## How we are affected - *Greenhouse gas emissions*

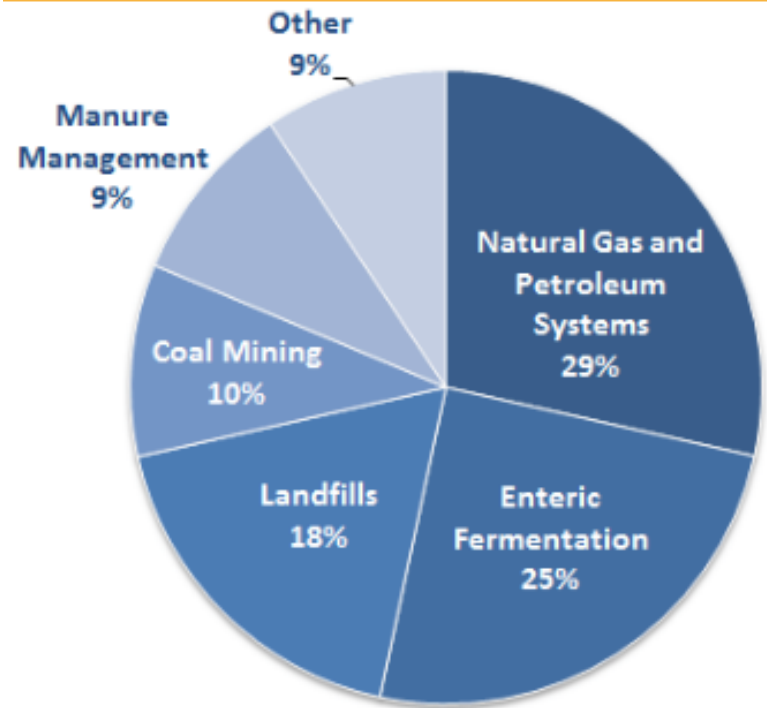
“Pound for pound, the comparative impact of CH<sub>4</sub> on climate change is over 20 times greater than CO<sub>2</sub> over a 100-year period.”

- EPA

“The proposed Kinder Morgan project... is also contrary to the state’s commitment to meet the green house gas (GHG) emission reduction targets of the *Global Warming Solutions Act*.”

- Henry Tepper, President, MassAudubon

**U.S. Methane Emissions, By Source**



Note: All emission estimates from the *Inventory of U.S. Greenhouse Gas Emissions and Sinks: 1990–2012*.

# How we are affected – Gas Leaks

---

- Nationally, 2.6 trillion cubic feet of natural gas “lost” between 2000-2011
- Equivalent to releasing 56.2 million metric tons of CO<sub>2</sub>
- In Mass., 99 billion cubic feet of natural gas “lost” between 2000-2011
- Mass. ratepayers paid as much as \$1.2 billion for gas they never received
- At least 45% of Mass.’ methane emissions come from leaks

## America Pays for Gas Leaks

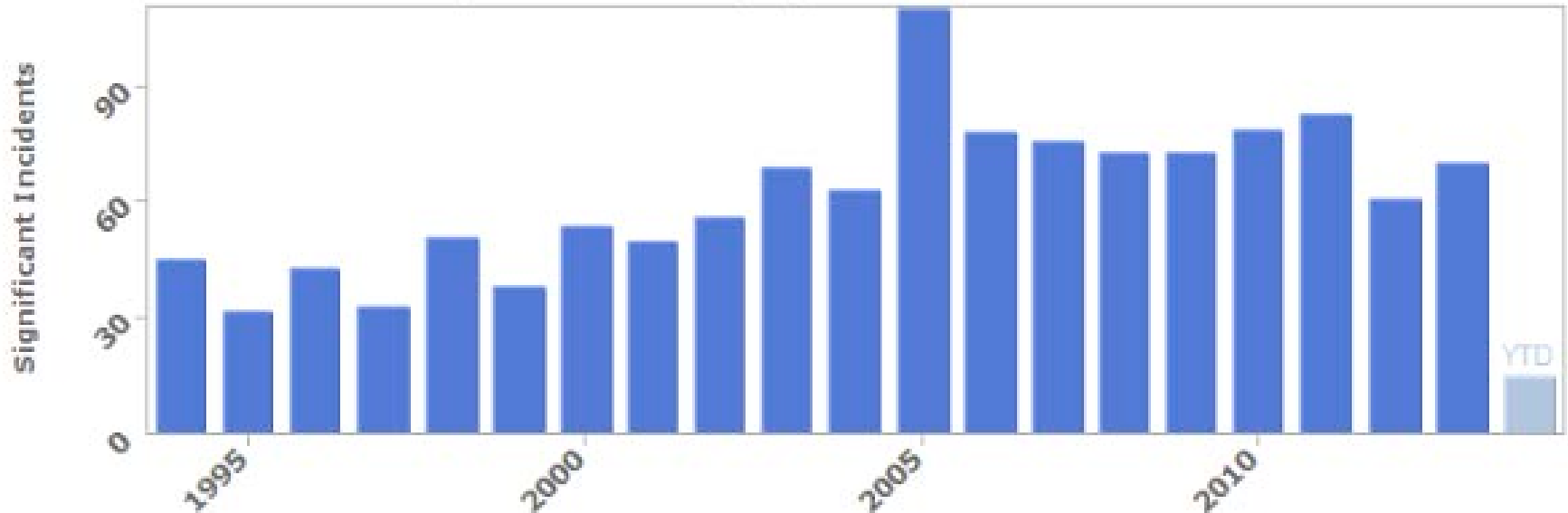


## Natural Gas Pipeline Leaks Cost Consumers Billions

A report prepared for Sen. Edward J. Markey

## How we are affected - *Potential safety issues*

National, Gas Transmission, Significant Incidents: Count 1994-2013



Source: PHMSA Significant Incidents Files, Apr 01, 2014

Since 1995:

- 1247 incidents
- 41 fatalities
- 195 injuries
- \$1.7 Billion in property damage

An “incident” is recorded when:

- fatality or injury requiring in-patient hospitalization
- \$50,000 or more in total costs, measured in 1984 dollars
- highly volatile liquid releases of 5 barrels or more or other liquid releases of 50 barrels or more
- liquid releases resulting in an unintentional fire or explosion

# How are we all affected?

## - *Potential safety issues*

---











San Bruno CA, 2010:

- 30" pipeline explosion
- 8 fatalities
- Dozens of homes destroyed



## How we are affected - *Residents' concerns*

Pipeline's Potential QOL Impact	Homeowner Perspective
Homeowners rights/eminent domain	
Rate increases to pay for pipeline	
Natural resources and habitats	
Town and regional character	
Safety issues	
Insurance costs	
Property values	
Pipeline expansion	
Electricity rates	?



Positive  
impact



Potential  
positive  
impact



Potential  
negative  
impact

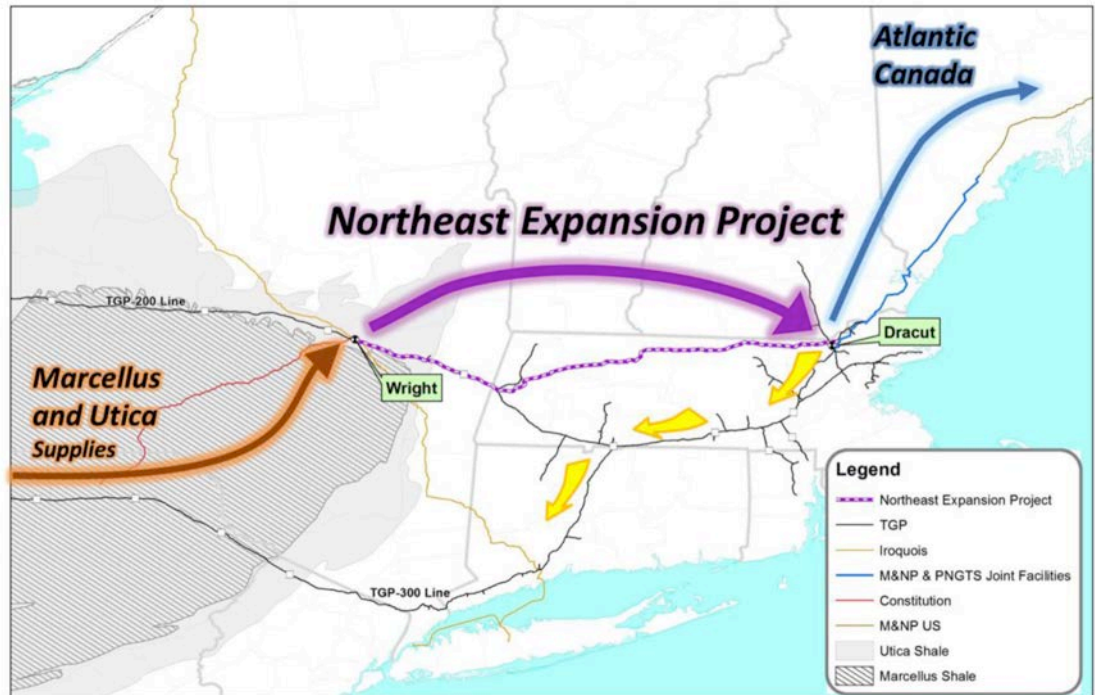


Negative  
impact

## Who benefits – *Some gas planned for export*

“In response to significant interest from local distribution companies, electric generators, industrial end users and **developers of liquefied natural gas projects in New England and Atlantic Canada**, Tennessee is holding an open season to solicit requests for service on new capacity which can be sized from approximately 600,000 Mcf per day (“Mcf/d”) up to 2.2 Bcf per day (“Bcf/d”)”

- *Kinder Morgan Northeast Expansion Open Season notice*



New England would not fully benefit from this project

# What Opponents Have Been Doing

## PUBLIC OPPOSITION

- Statewide Petition to Ban New Natural Gas Pipelines and Champion Efficiency and Renewable Energy, over 9,100 signatures online and on paper
- Town Resolutions  
15 out of 15 towns & cities that have held votes so far have passed Resolutions to ban new pipelines within town borders, or Resolutions in favor of town rights to maintain local control.

### PASSED

- |                 |               |
|-----------------|---------------|
| • Ashby         | • Pelham*     |
| • Chesterfield* | • Plainfield  |
| • Conway        | • Sandisfield |
| • Cummington*   | • Shelburne   |
| • Lenox         | • Warwick     |
| • Leverett*     | • Wendell     |
| • Northampton*  | • Windsor     |
|                 | • Worthington |

### SLATED FOR VOTE

- Ashfield (2-Pipeline & Comm. Rights)
- Becket\*
- Dalton

*Drafting resolutions or gathering signatures*

- Richmond, Deerfield, Dracut, North Adams and more!
- Pepperell is working on writing a joint resolution for multiple towns in the area, including Hollis, NH

# Conservation Groups Opposing The Pipeline

---



Nashoba Conservation Trust



**Massachusetts Association of Conservation Commissions**

*protecting wetlands, open space and biological diversity through education and advocacy*



# What Can We All Do?

---

- ***Send a message tonight to our legislators! Vote YES on the Non-Binding Resolution to oppose the pipeline.***
- This is only the beginning! Keep abreast of activities and information on the town and new web site dedicated to educating the public about the pipeline.  
<http://grotonspace.com/pipeline>
- Speak to your neighbors, friends and get them to speak/write to elected officials...this affects all of us.
- Support the Selectmen on their new “Coalition Committee” which coordinates activities and position statements with neighboring towns. Encourage all town officials and boards to proactively oppose the pipeline.
- Participate/volunteer to help in ***Stop the Pipeline Walk Across Massachusetts in Groton on July 23***
- Attend ***Stop the Pipeline Rally*** at State House on June 30
- Join over 9,000 other MA residents in signing the ***Stop the Pipeline petition*** to be sent to Governor Patrick.
- Reach out directly to state reps, senators, congressmen, and agencies involved in the decision process
- Stay up to date on the activities/positions of aligned groups, such as NRWA, GCT, GCC, School Committee and others.