

N/F
GROTON CONSERVATION TRUST
BOOK 20461 PAGE 126
OFF LONGLEY ROAD
ASSESSOR PARCEL ID: 226-4

BOOK 312
138 SAND HILL ROAD
ASSESSOR PARCEL ID: 226-3

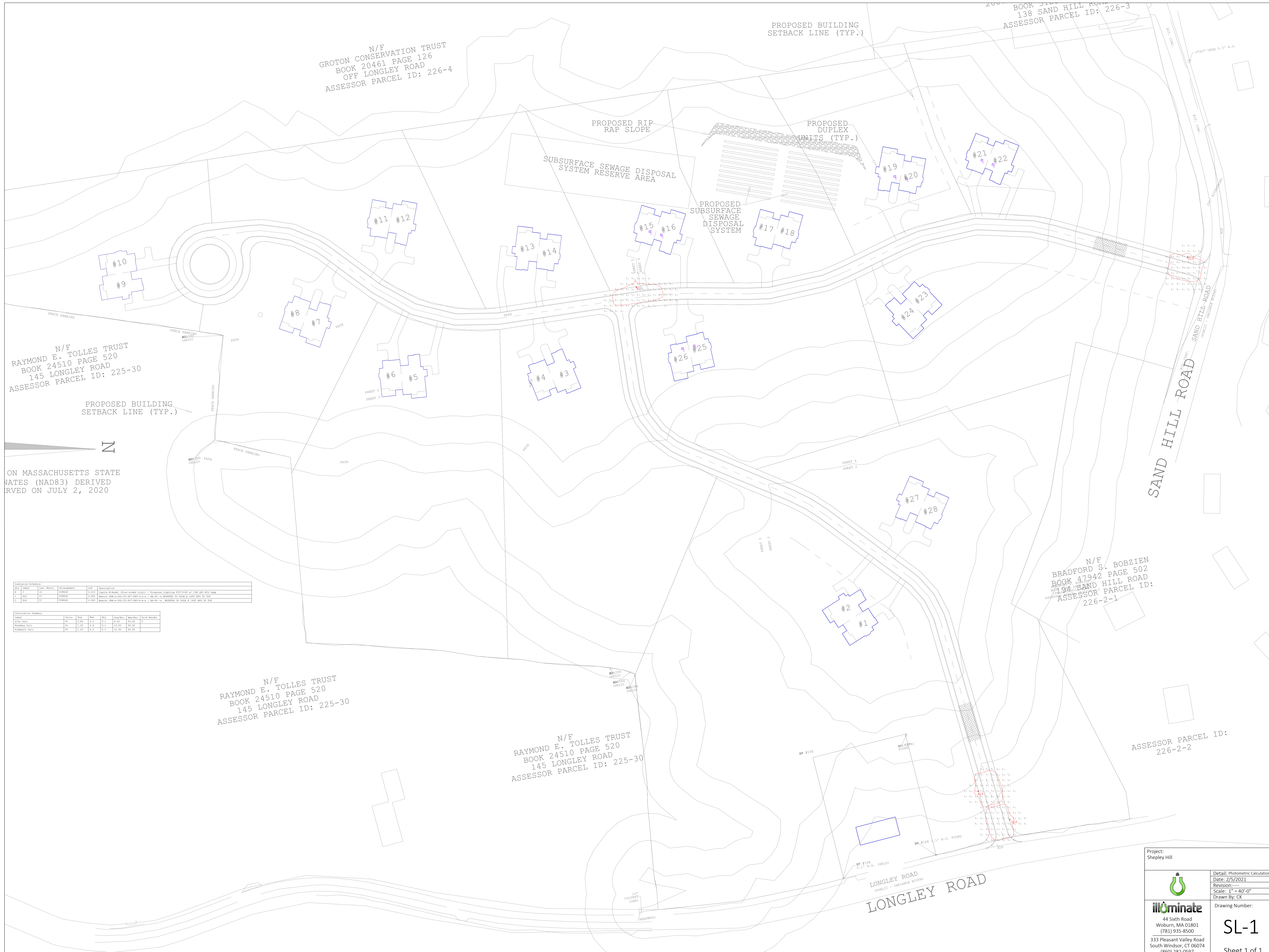
N/F
RAYMOND E. TOLLES TRUST
BOOK 24510 PAGE 520
145 LONGLEY ROAD
ASSESSOR PARCEL ID: 225-30

N/F
BRADFORD S. BOBZIEN
BOOK 47942 PAGE 502
194 SAND HILL ROAD
ASSESSOR PARCEL ID:
226-2-1

N/F
RAYMOND E. TOLLES TRUST
BOOK 24510 PAGE 520
145 LONGLEY ROAD
ASSESSOR PARCEL ID: 225-30

N/F
RAYMOND E. TOLLES TRUST
BOOK 24510 PAGE 520
145 LONGLEY ROAD
ASSESSOR PARCEL ID: 225-30

ASSESSOR PARCEL ID:
226-2-2



ON MASSACHUSETTS STATE
MAPS (NAD83) DERIVED
ON JULY 2, 2020

Qty	Notes	Dim.	Material	Arrangement	SLP	Description
1	12"	12"	CONCRETE	12x12	0.000	CONCRETE FOUNDATION FOR PROPOSED LIGHTING FIXTURES AT 12" AND 24" SPACING
1	12"	12"	CONCRETE	12x12	0.000	CONCRETE FOUNDATION FOR PROPOSED LIGHTING FIXTURES AT 12" AND 24" SPACING
1	12"	12"	CONCRETE	12x12	0.000	CONCRETE FOUNDATION FOR PROPOSED LIGHTING FIXTURES AT 12" AND 24" SPACING

Calculation Summary	Notes	Dim.	Material	Arrangement	SLP	Description
1	12"	12"	CONCRETE	12x12	0.000	CONCRETE FOUNDATION FOR PROPOSED LIGHTING FIXTURES AT 12" AND 24" SPACING
1	12"	12"	CONCRETE	12x12	0.000	CONCRETE FOUNDATION FOR PROPOSED LIGHTING FIXTURES AT 12" AND 24" SPACING

Project: Shepley Hill

illuminate
44 Sixth Road
Woburn, MA 01801
(781) 935-8500

333 Pleasant Valley Road
South Windsor, CT 06074
(860) 282-0597

Date: 2/5/2021
Revision:
Scale: 1" = 40'-0"
Drawn By: CK

Detail: Photometric Calculation
Drawing Number:
SL-1
Sheet 1 of 1