

# GROTON MASTER PLAN 2024: Inventory & Assessment (I&A) Map Package Revised June 7, 2024

## Groton Master Plan - Inventory & Assessment Map Package List:

### **3.1 Land Use Maps:**

- 3.1.1 General Reference Map
- 3.1.2 Unofficial Zoning Map
- 3.1.3 Land Use
- 3.1.4 Age of Housing

### **3.2 Natural and Cultural Resource Maps:**

- 3.2.1 Geology & Soils
  - 3.2.1A General Geology & Soils 1:250,000<sup>1</sup>
  - 3.2.1B Specific Geology & Soils 1:24,000<sup>2</sup>
- 3.2.2 Water Resources
- 3.2.3 Agricultural Land & Farmland Soils
- 3.2.4 Historic Resources

### **3.3 Open Space and Recreation Maps:**

- 3.3.1 Open Spaces and Recreation

### **3.4 Transportation Maps:**

- 3.4.1 Roadway Classification
- 3.4.2 Pedestrian/Cyclist Circulation
- 3.4.3 Average Daily Traffic
- 3.4.4 Vehicle Crash Locations

### **3.6 Economic Development Maps:**

- 3.6.1 Local Farms and Orchards

### **3.7 Community Facilities & Services Maps:**

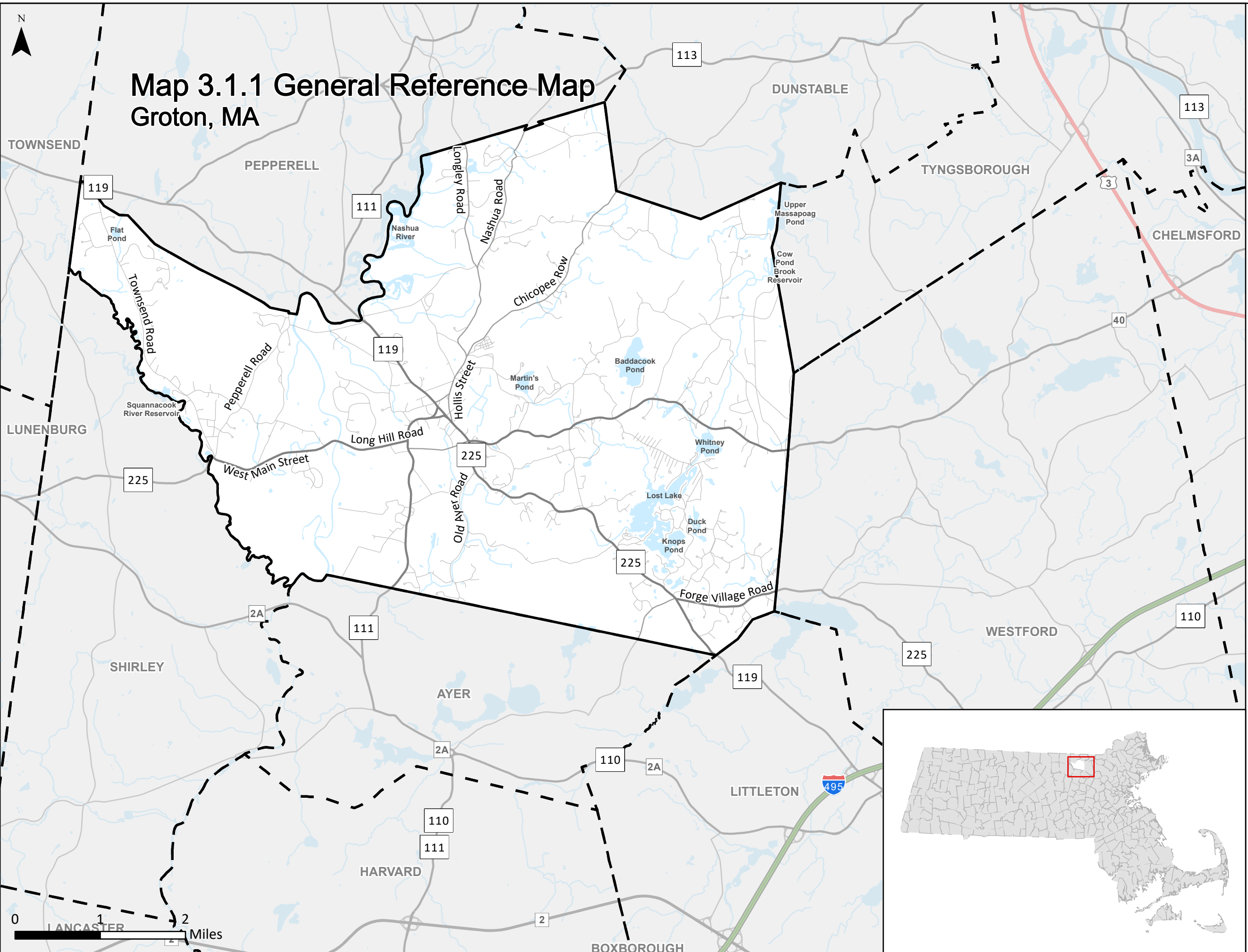
- 3.7.1 Municipal Facilities & Amenities

---

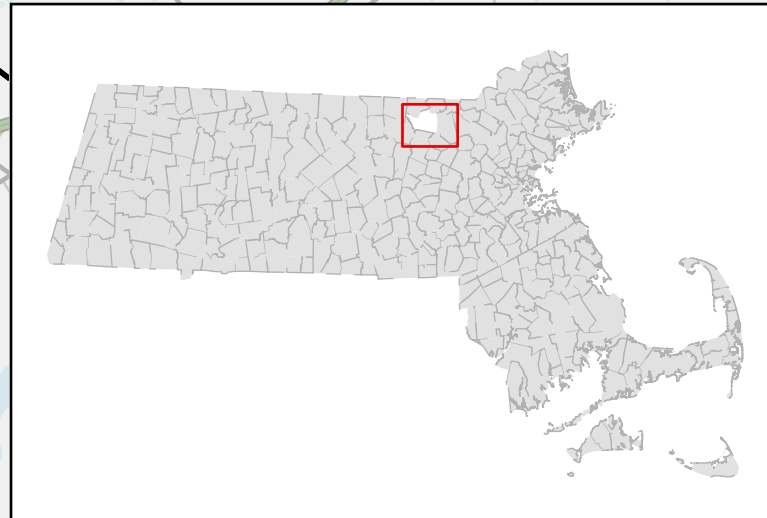
<sup>1</sup> This layer is a statewide surficial geology datalayer showing the location of sand and gravel deposits. (<https://www.mass.gov/info-details/massgis-data-surficial-geology-1250000>)

<sup>2</sup> This layer is a statewide digital map data of surficial geology at a 1:24,000-scale, developed by the U.S. Geological Survey. This compilation of surficial geologic materials defines the areas of exposed bedrock, and the boundaries between glacial till, glacial stratified deposits, and overlying early-postglacial and postglacial deposits. (<https://www.mass.gov/info-details/massgis-data-usgs-124000-surficial-geology>)

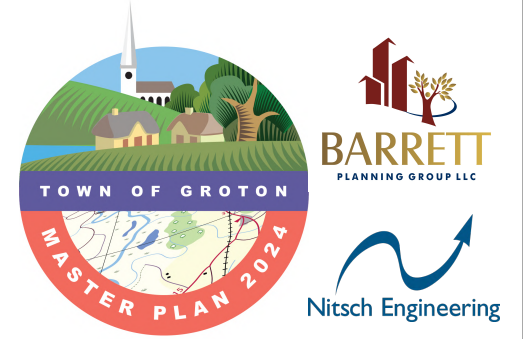
# Map 3.1.1 General Reference Map Groton, MA



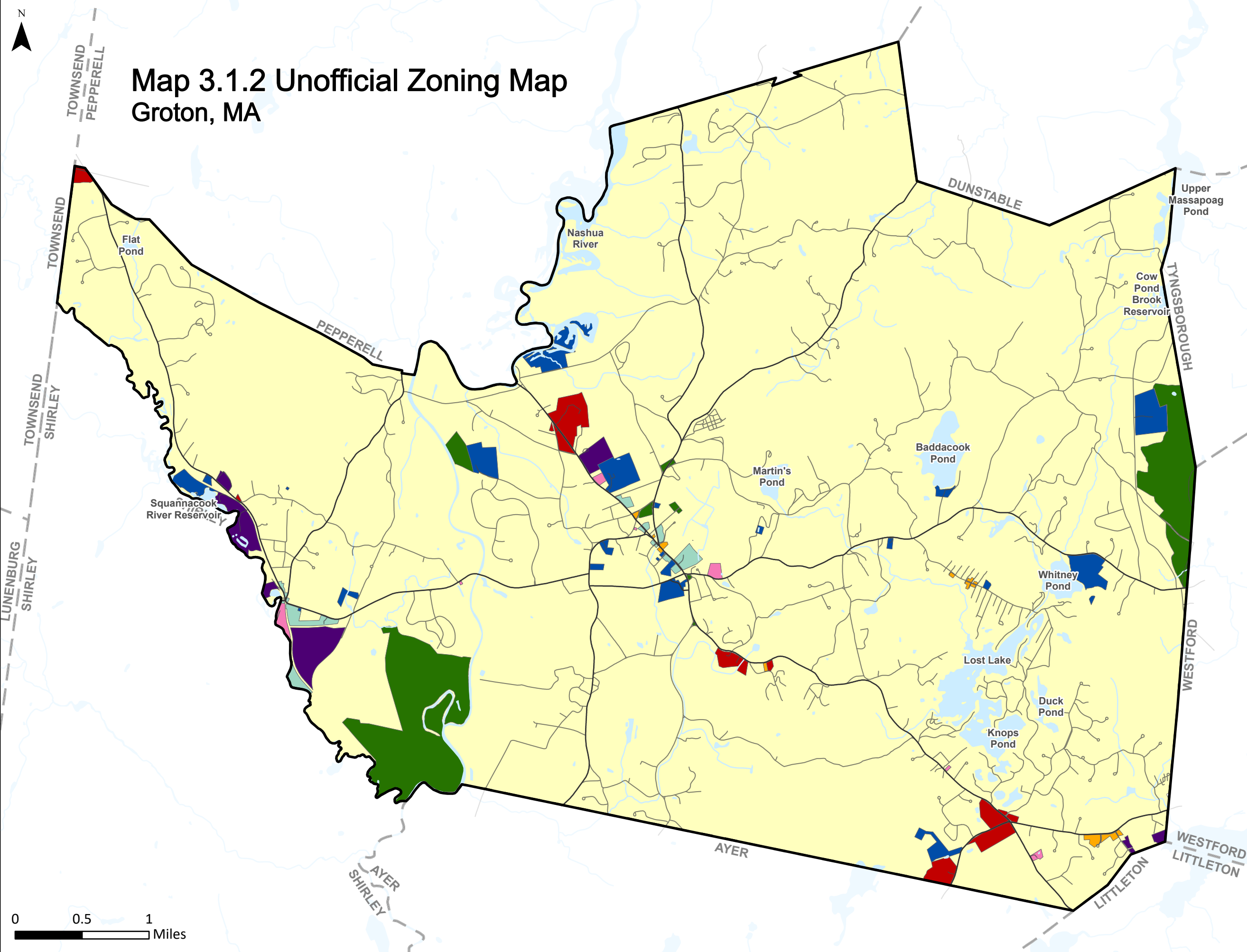
- Boundaries**
- Town of Groton
  - Surrounding Towns
- Land Use Categories**
- Water
- Roads**
- Interstate
  - U.S. Highway
  - State Route
  - Non-numbered Road



Date: May 2024  
 Source: Town of Groton, MassGIS 2024, MassDOT 2024, and U.S. Census Bureau 2021

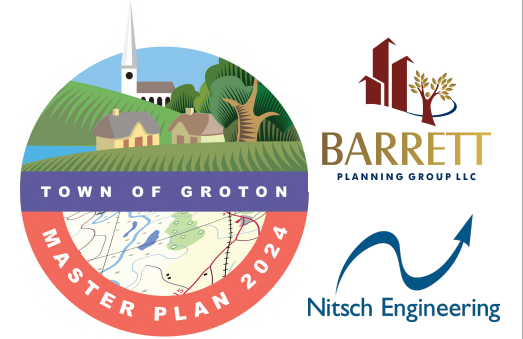


# Map 3.1.2 Unofficial Zoning Map Groton, MA



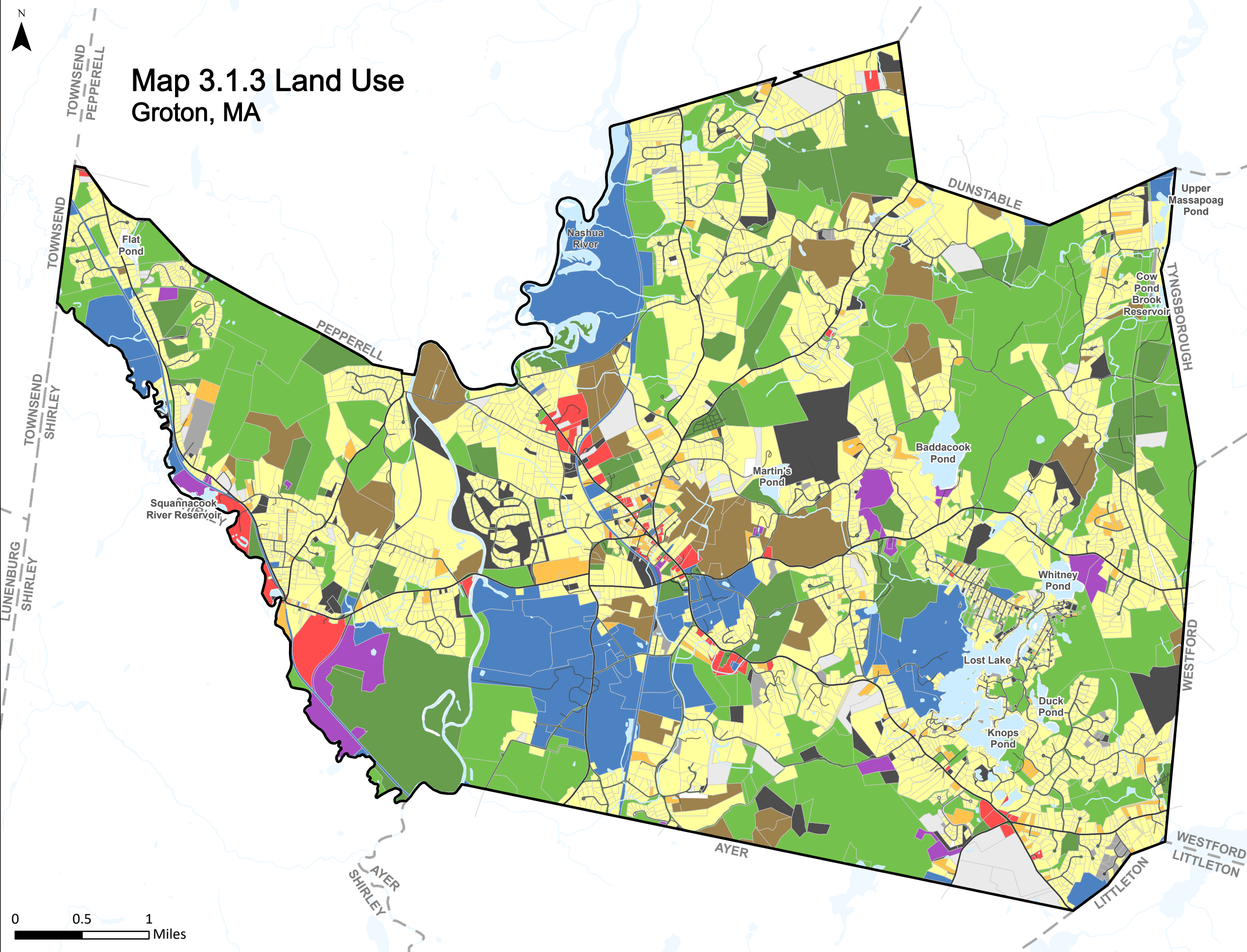
- Boundaries**
- Town of Groton
  - Surrounding Towns
- Land Use Categories**
- Water
- Roads**
- Major Roads
  - Minor Roads
- Zoning**
- Residential/Agricultural
  - General Business
  - Neighborhood Business
  - Village Center Business
  - Residential/Business
  - Official Open Space
  - Public Use District
  - Industrial

Date: May 2024  
 Source: Town of Groton, MassGIS 2022, MassDOT 2024, and U.S. Census Bureau 2021





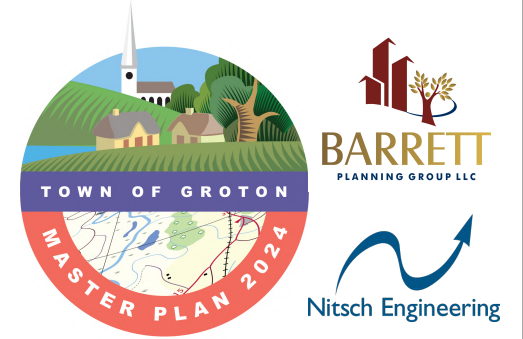
# Map 3.1.3 Land Use Groton, MA



- Boundaries**
- Town of Groton
  - Surrounding Towns
- Roads**
- Major Roads
  - Minor Roads
- Land Use Categories**
- Single-Family
  - Multifamily
  - Commercial
  - Institutional/Nonprofit
  - Agriculture
  - Open Space
  - Public Land
  - Utility
  - Vacant Land - Developable
  - Vacant Land - Potentially Developable
  - Vacant Land - Undevelopable
  - Water

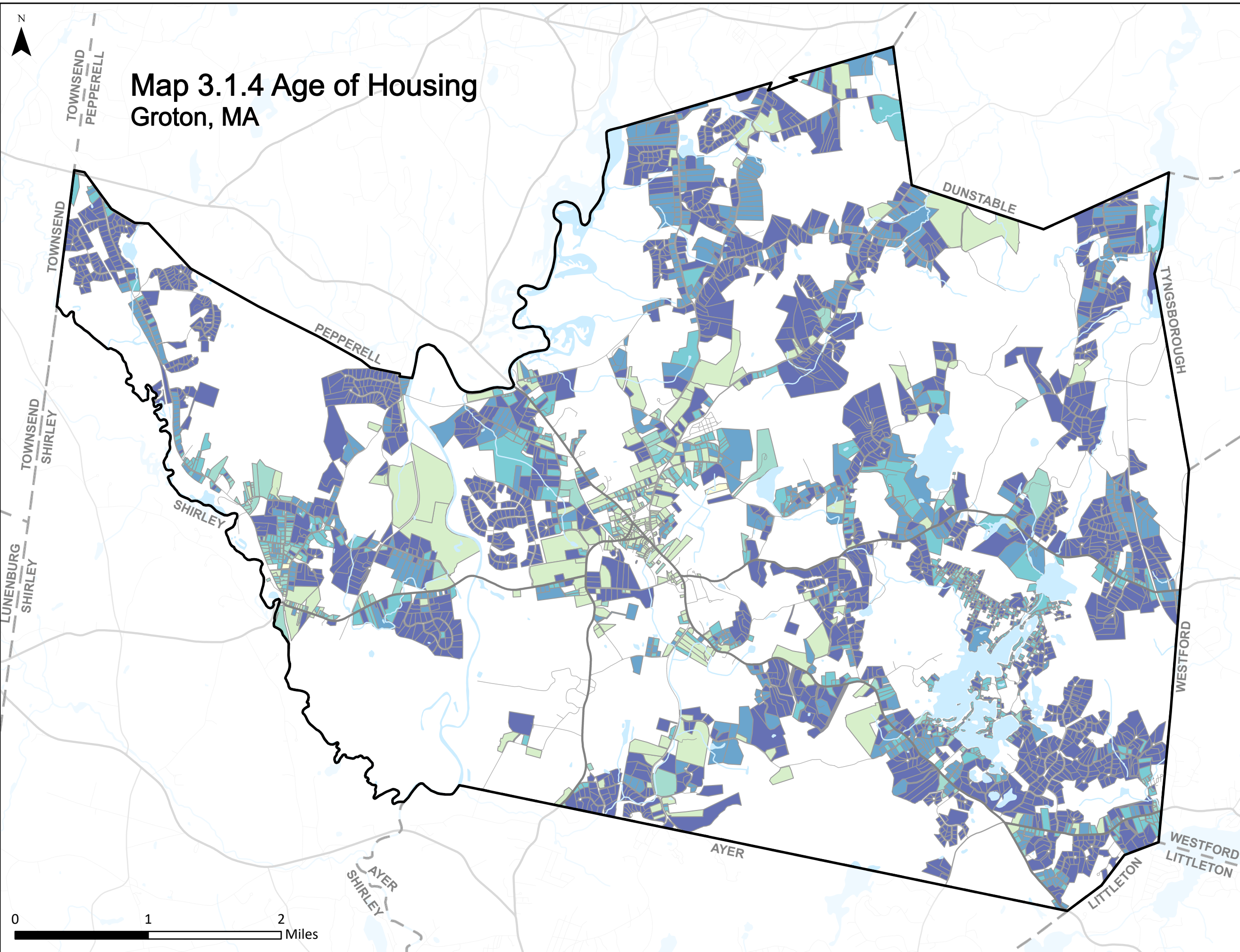
0 0.5 1 Miles

Date: May 2024  
 Source: Town of Groton, MassGIS 2022, MassDOT 2024, and U.S. Census Bureau 2021



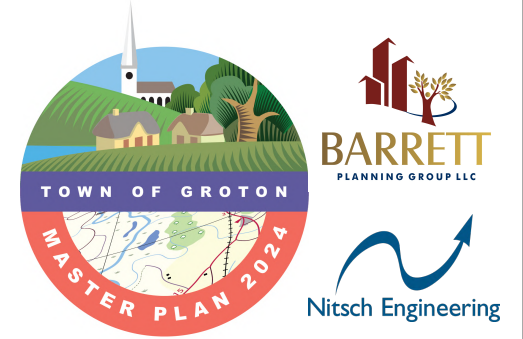


# Map 3.1.4 Age of Housing Groton, MA



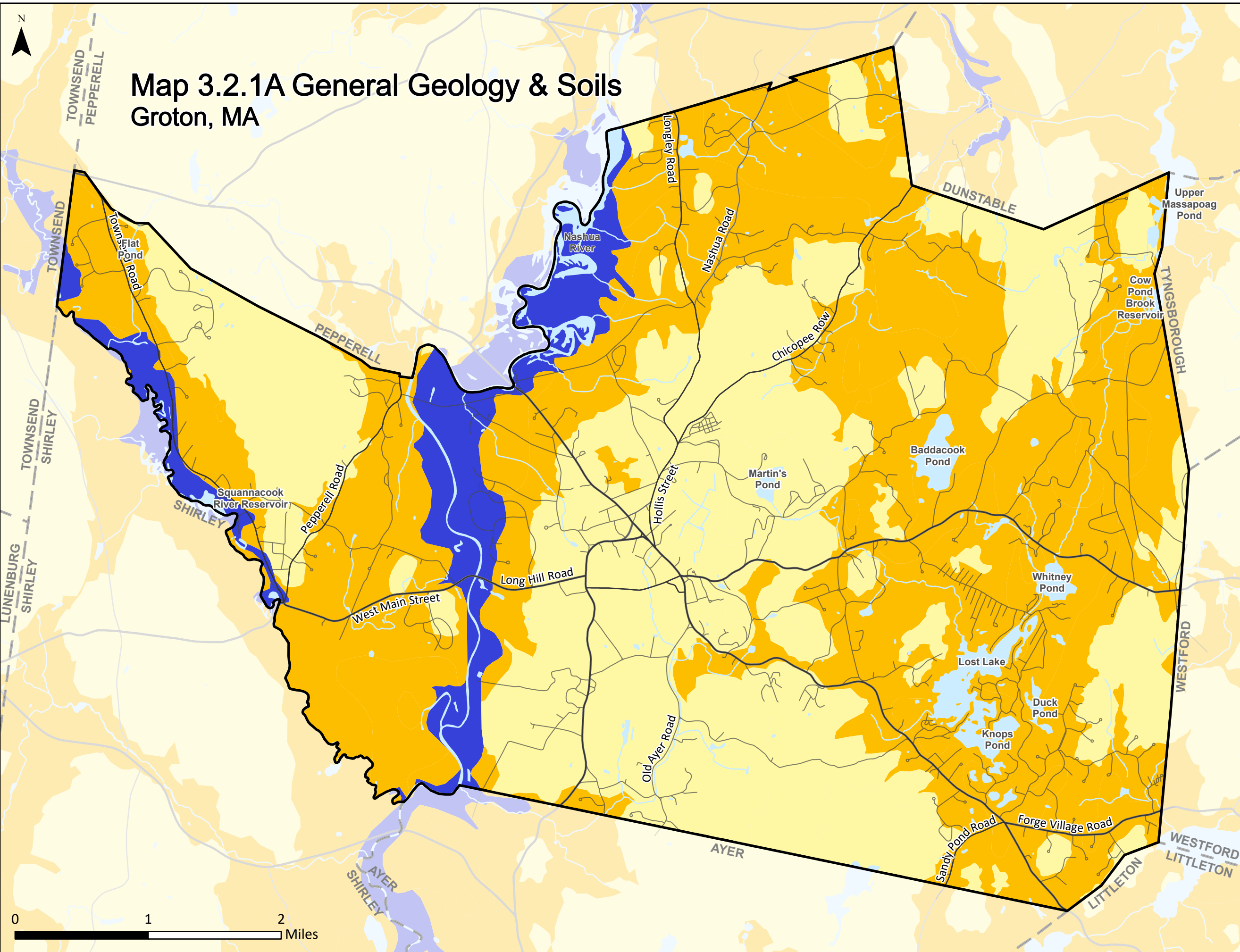
- Boundaries**
- Town of Groton
  - Surrounding Towns
- Land Use Categories**
- Water
- Roads**
- Interstate
  - U.S. Highway
  - State Route
  - Non-numbered Road
  - Local Roads
- Age of Housing**
- No Year Built
  - Pre 1865
  - 1866 - 1899
  - 1900 - 1919
  - 1920 - 1939
  - 1940 - 1959
  - 1960 - 1979
  - 1980 - 1999
  - 2000 to Present

Date: May 2024  
 Source: Town of Groton, MassGIS 2022, MassDOT 2024, and U.S. Census Bureau 2021

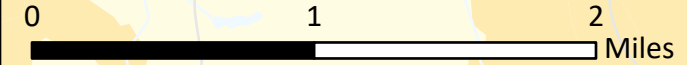




# Map 3.2.1A General Geology & Soils Groton, MA



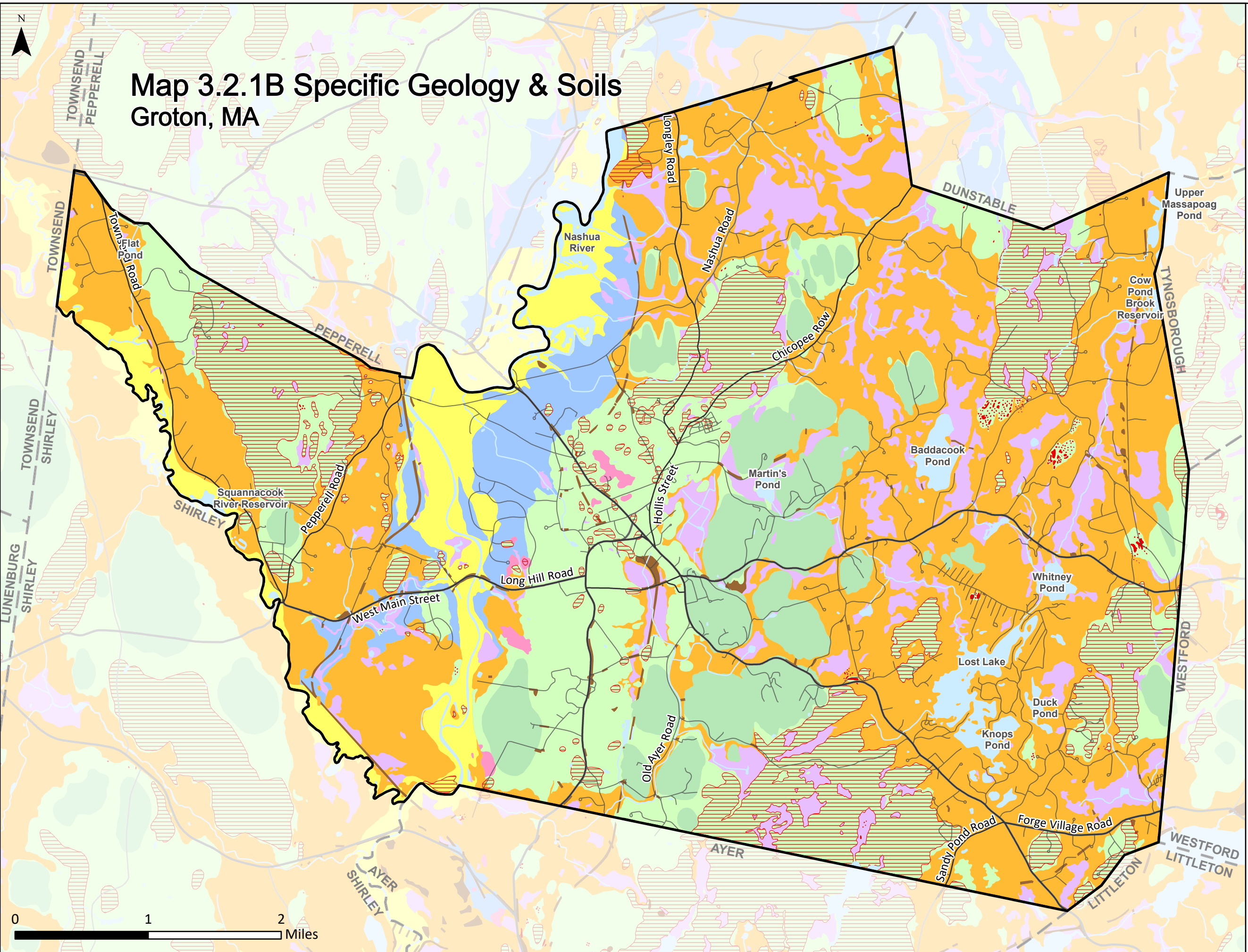
- Boundaries**
  - Town of Groton
  - Surrounding Towns
- Land Use Categories**
  - Water
- Roads**
  - Major Roads
  - Minor Roads
- Surficial Geology (1:250,000)**
  - Sand and Gravel
  - Till or Bedrock
  - Floodplain Alluvium



Date: May 2024  
 Source: Town of Groton, MassGIS 2024, MassDOT 2024, and U.S. Census Bureau 2021

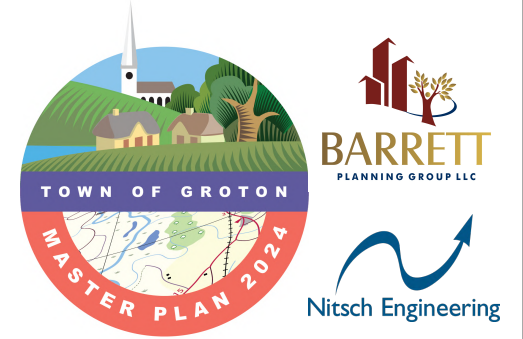


# Map 3.2.1B Specific Geology & Soils Groton, MA



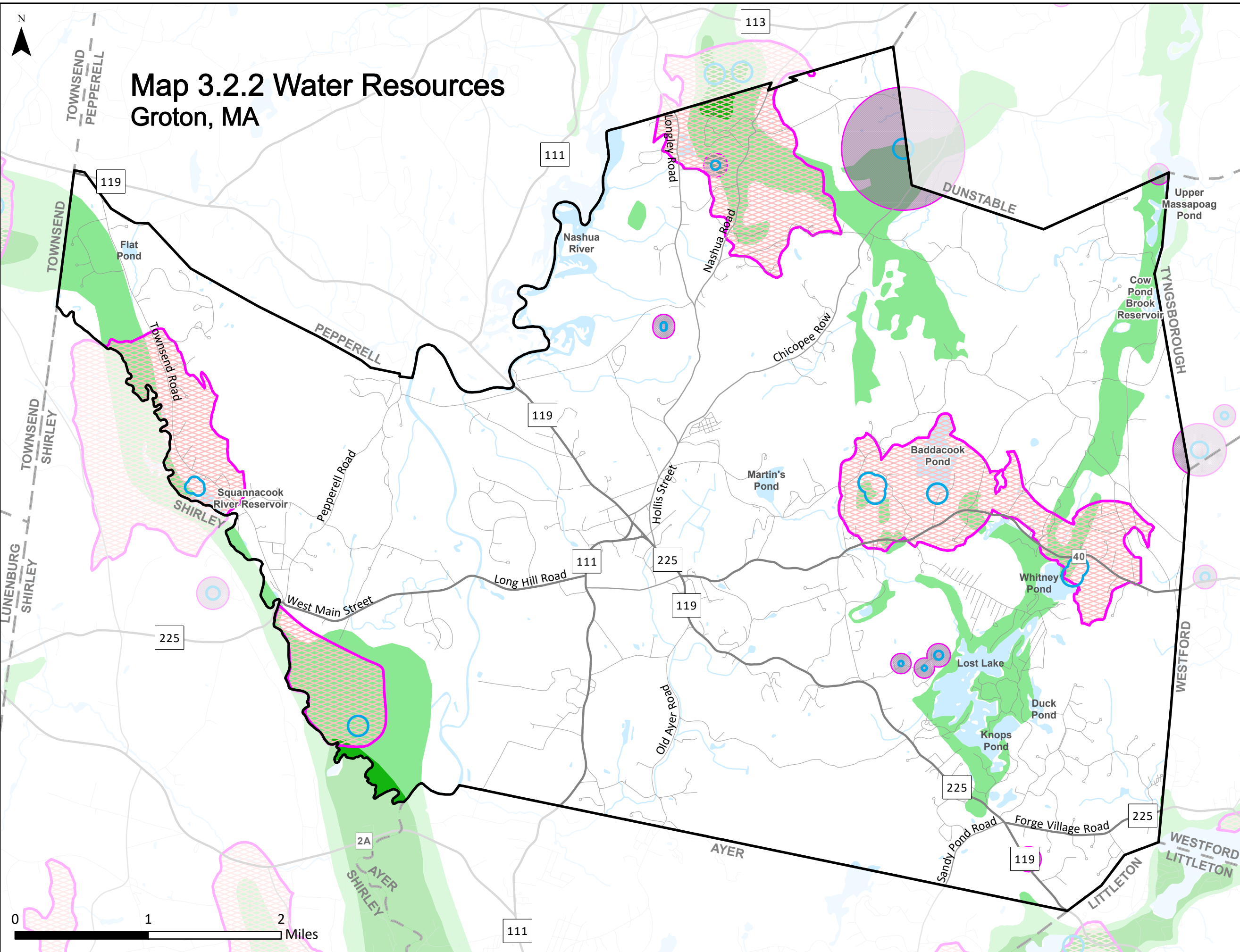
- Boundaries**
  - Town of Groton
  - Surrounding Towns
- Land Use Categories**
  - Water
- Roads**
  - Major Roads
  - Minor Roads
- Surficial Geology (1:24,000)**
  - Abundant Outcrop and Shallow Bedrock
- Postglacial Deposits**
  - Artificial Fill
  - Swamp and Marsh Deposits
  - Alluvium
- Early Postglacial Deposits**
  - Inland Dune
- Glacial Stratified Deposits**
  - Coarse
  - Glaciolacustrine Fine
- Till Bedrock**
  - Thick Till
  - Bedrock Outcrop
  - Thin Till

Date: May 2024  
 Source: Town of Groton, MassGIS 2024, MassDOT 2024, and U.S. Census Bureau 2021



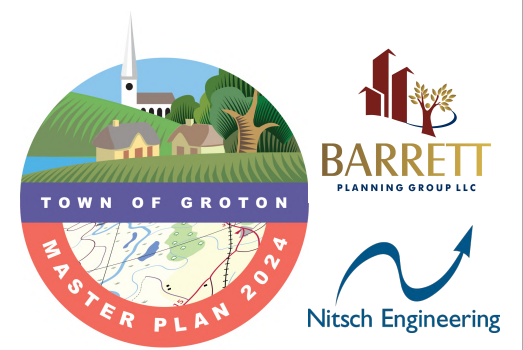


# Map 3.2.2 Water Resources Groton, MA



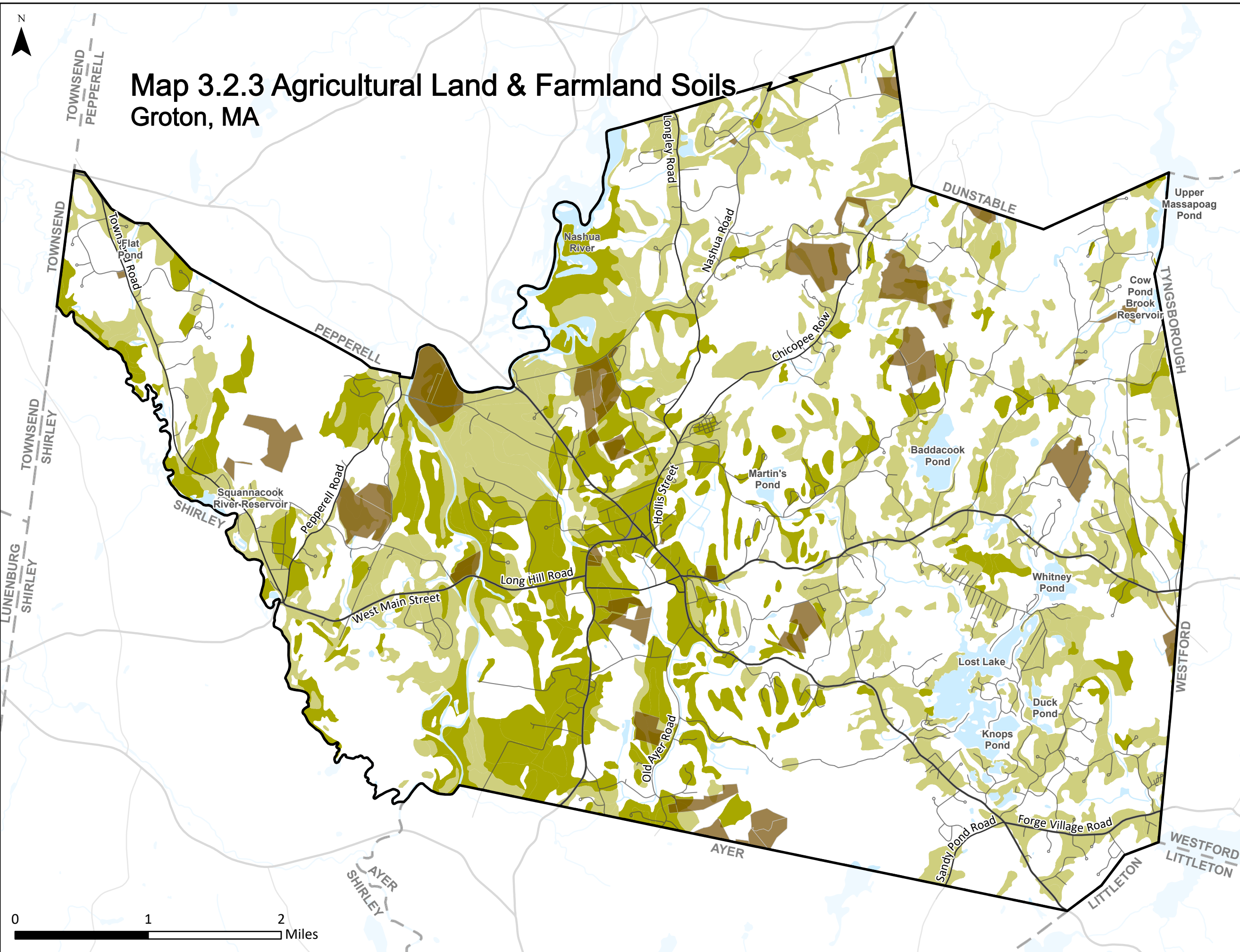
- Boundaries**
- Town of Groton
  - Surrounding Towns
- Roads**
- Interstate
  - U.S. Highway
  - State Route
  - Non-numbered Road
  - Local Roads
- Land Use Categories**
- Water
- Aquifers**
- High Yield
  - Medium Yield
  - Low Yield
- Wellhead Protection Areas**
- DEP Approved Zone I
  - DEP Approved Zone II
  - Interim WPA

Date: May 2024  
 Source: Town of Groton, MassGIS 2024, MassDOT 2024, and U.S. Census Bureau 2021

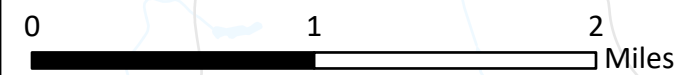




# Map 3.2.3 Agricultural Land & Farmland Soils Groton, MA



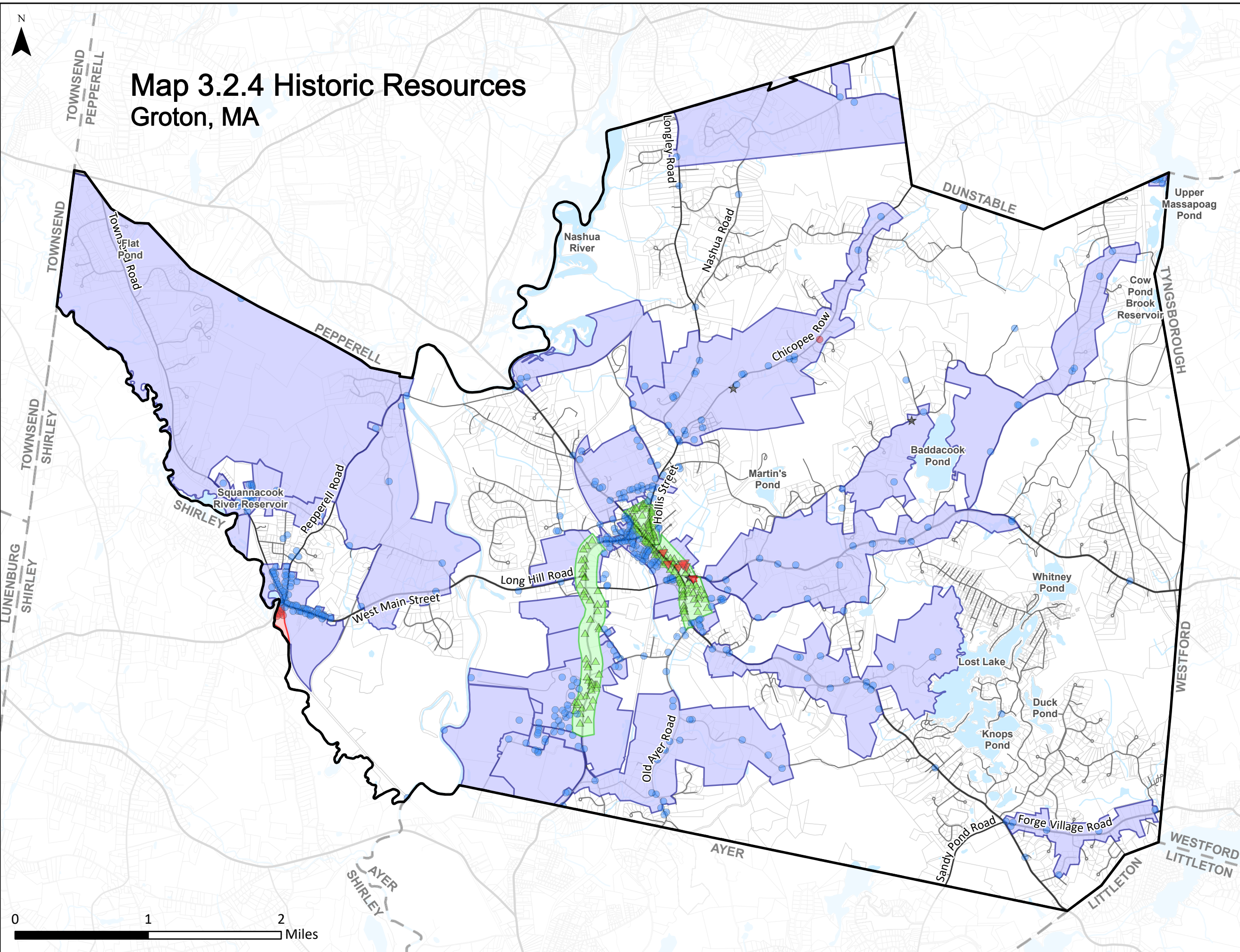
- Boundaries**
  - Town of Groton
  - Surrounding Towns
- Land Use Categories**
  - Water
- Roads**
  - Major Roads
  - Minor Roads
- Agriculture**
  - Agricultural Land
- Farmland Soils**
  - Prime Farmland
  - Farmland of Statewide Importance



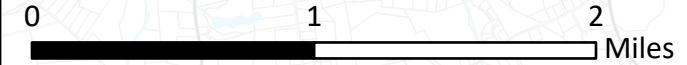
Date: May 2024  
 Source: Town of Groton, MassGIS 2024, MassDOT 2024, and U.S. Census Bureau 2021



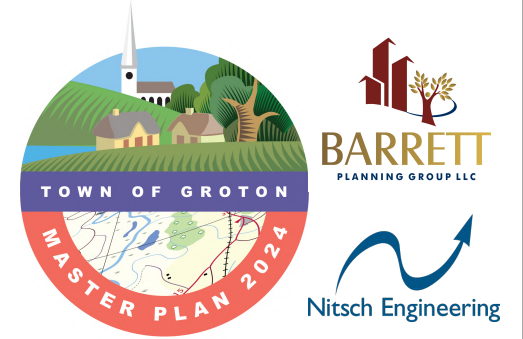
# Map 3.2.4 Historic Resources Groton, MA



- Boundaries**
- Town of Groton
  - Surrounding Towns
- Land Use Categories**
- Water
- Roads**
- Major Roads
  - Minor Roads
- MassHistoric Commission Inventory**
- National Register of Historic Places
  - Preservation Restriction
  - Local Historic District
  - NRHP and LHD
  - Inventoried Property
- Legend**
- National Register of Historic Places
  - Local Historic District
  - Inventoried Property

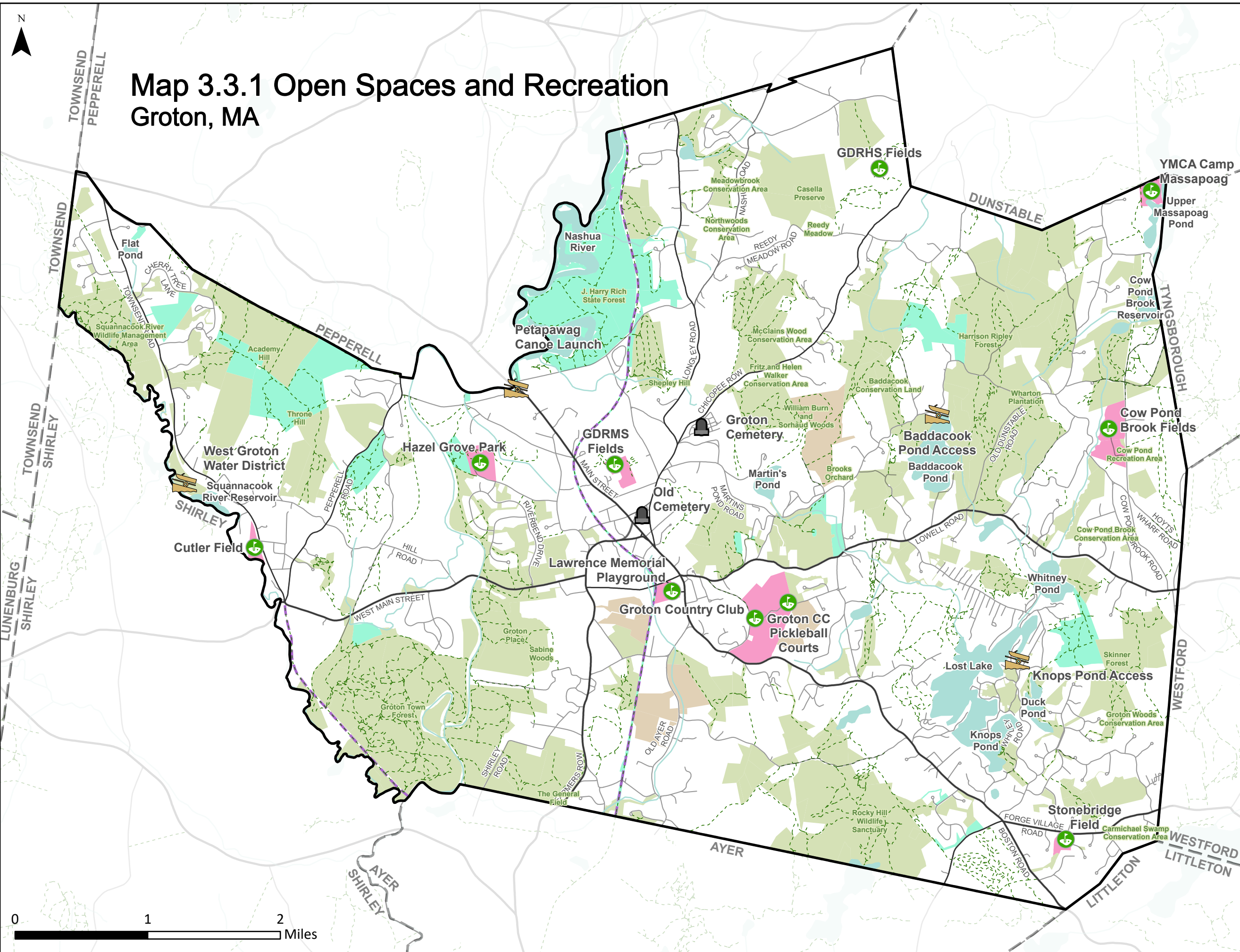


Date: May 2024  
 Source: Town of Groton, MassGIS 2024, MassDOT 2024, and U.S. Census Bureau 2021



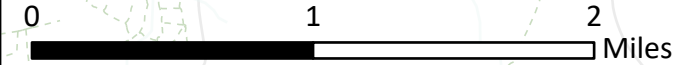
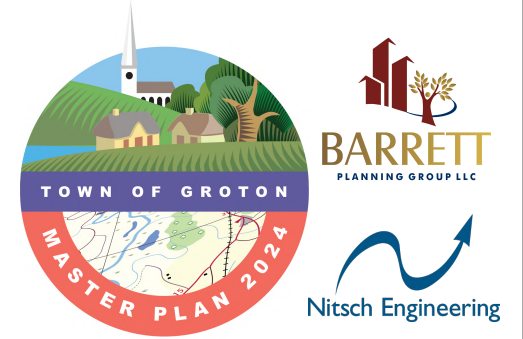


# Map 3.3.1 Open Spaces and Recreation Groton, MA



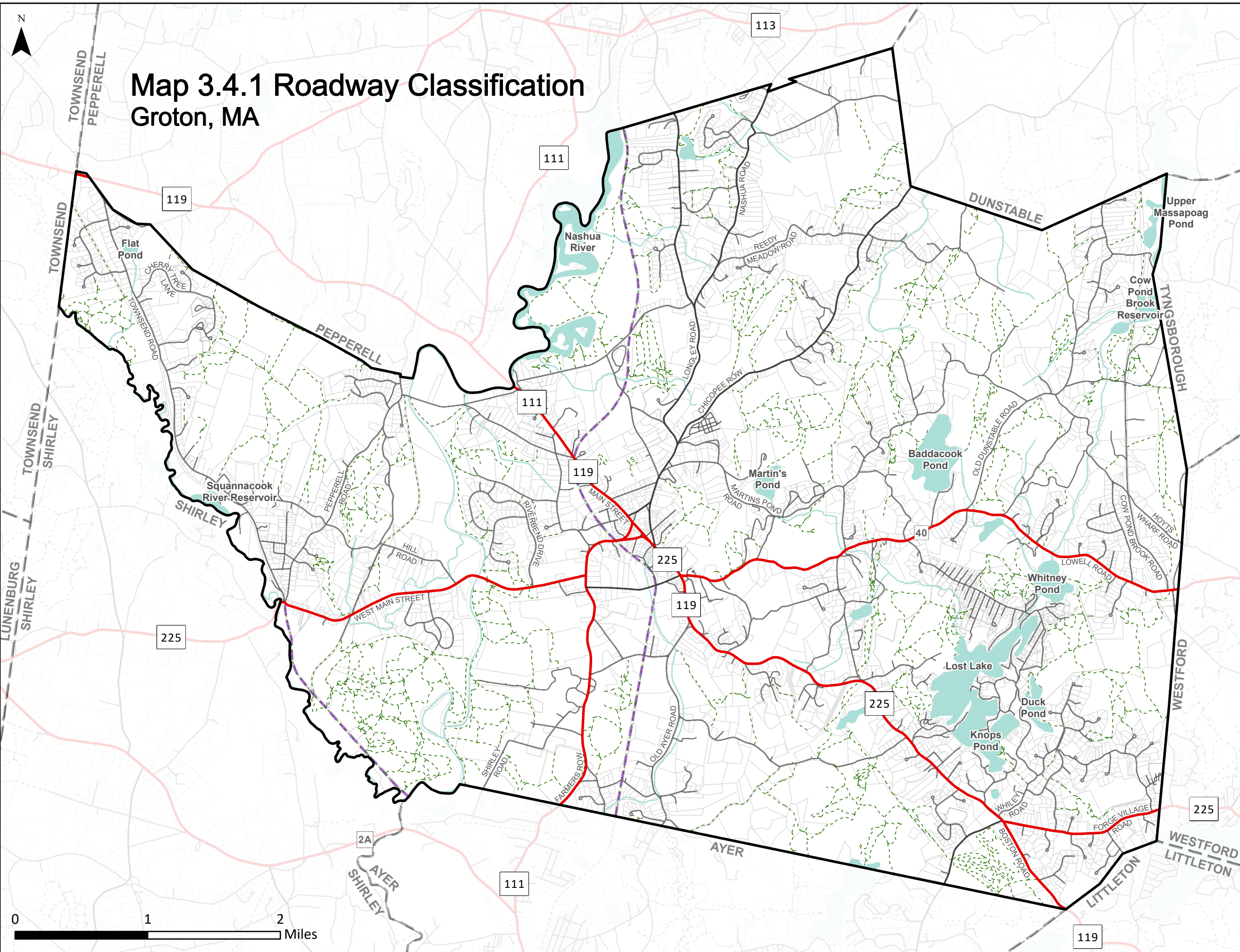
- Boundaries**
  - Town of Groton
  - Surrounding Towns
- Open Space Facilities**
  - Access Areas
  - Recreation Fields
  - Cemeteries
- Water Features**
  - Major Lakes and Ponds
  - Major Rivers and Streams
- Roads**
  - Major Roads
  - Minor Roads
- Trails**
  - Existing Bike Paths
  - Trails
- Open Spaces**
  - Recreation
  - Recreation and Conservation
  - Conservation
  - Agriculture

Date: May 2024  
 Source: Town of Groton, MassGIS 2024, MassDOT 2024, and U.S. Census Bureau 2021



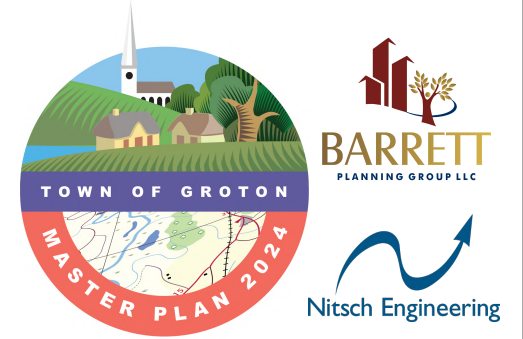


# Map 3.4.1 Roadway Classification Groton, MA



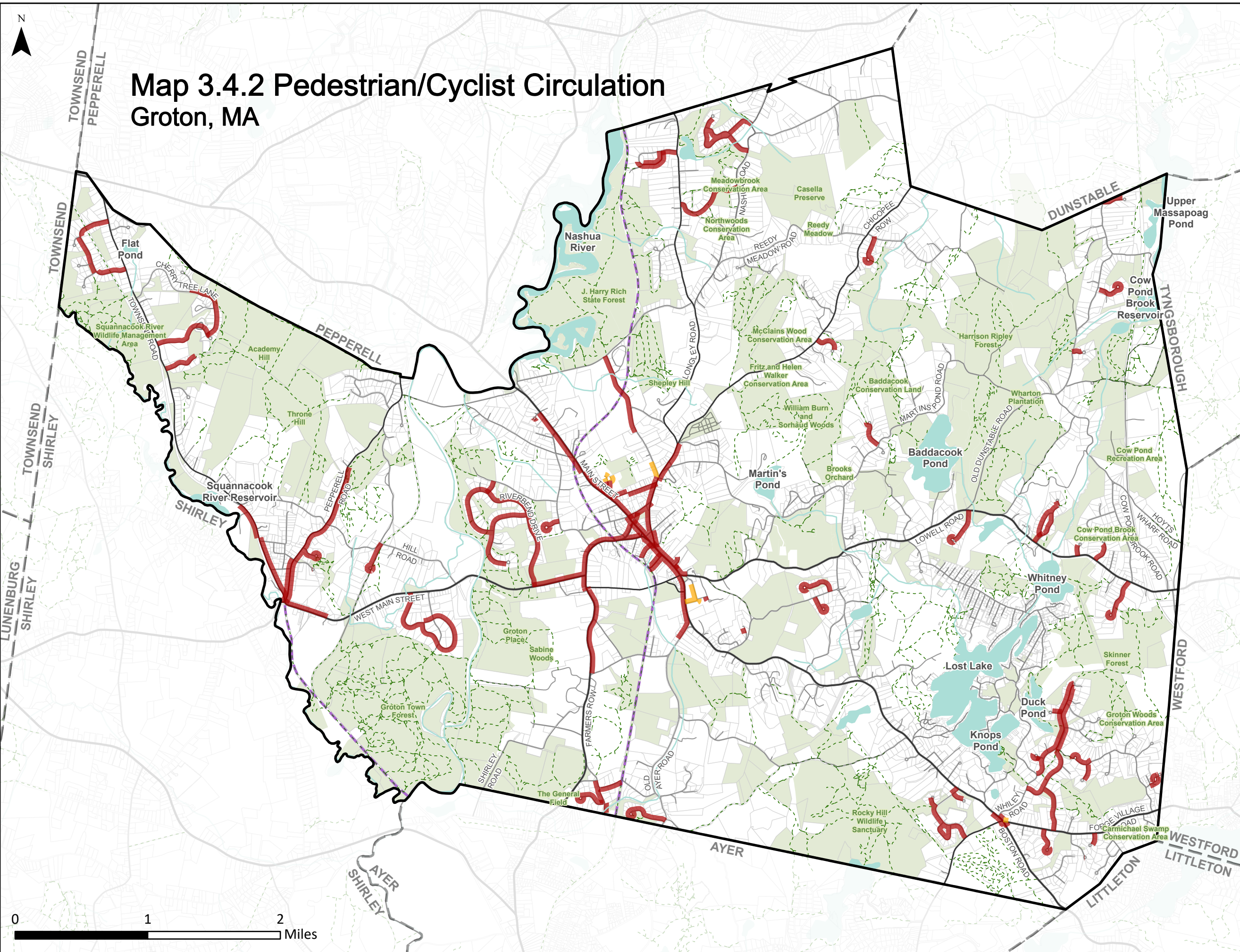
- Boundaries**
- Town of Groton
  - Surrounding Towns
- Water Features**
- Major Lakes and Ponds
  - Major Rivers and Streams
- Trails**
- Existing Bike Paths
  - Trails
- MassDOT Roads**
- Limited Access Highway
  - Multi-lane Highway, not limited access
  - Other numbered route
  - Major road - arterials and collectors
  - Minor street or road (with Road Inventory information, not class 1-4)
  - Minor street or road (with minimal Road Inventory information and no street name)

Date: May 2024  
 Source: Town of Groton, MassGIS 2024, MassDOT 2024, and U.S. Census Bureau 2021

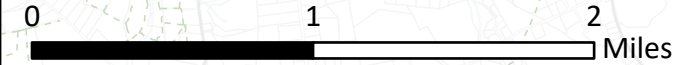




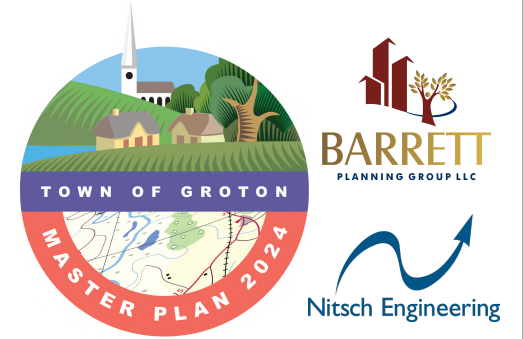
# Map 3.4.2 Pedestrian/Cyclist Circulation Groton, MA



- Boundaries**
  - Town of Groton
  - Surrounding Towns
- Open Spaces**
  - Conservation and Recreation
- Water Features**
  - Major Lakes and Ponds
  - Major Rivers and Streams
- Roads**
  - Major Roads
  - Minor Roads
- Trails**
  - Existing Bike Paths
  - Trails
- Sidewalks**
  - 2 ft - 5 ft
  - 6 ft - 10 ft

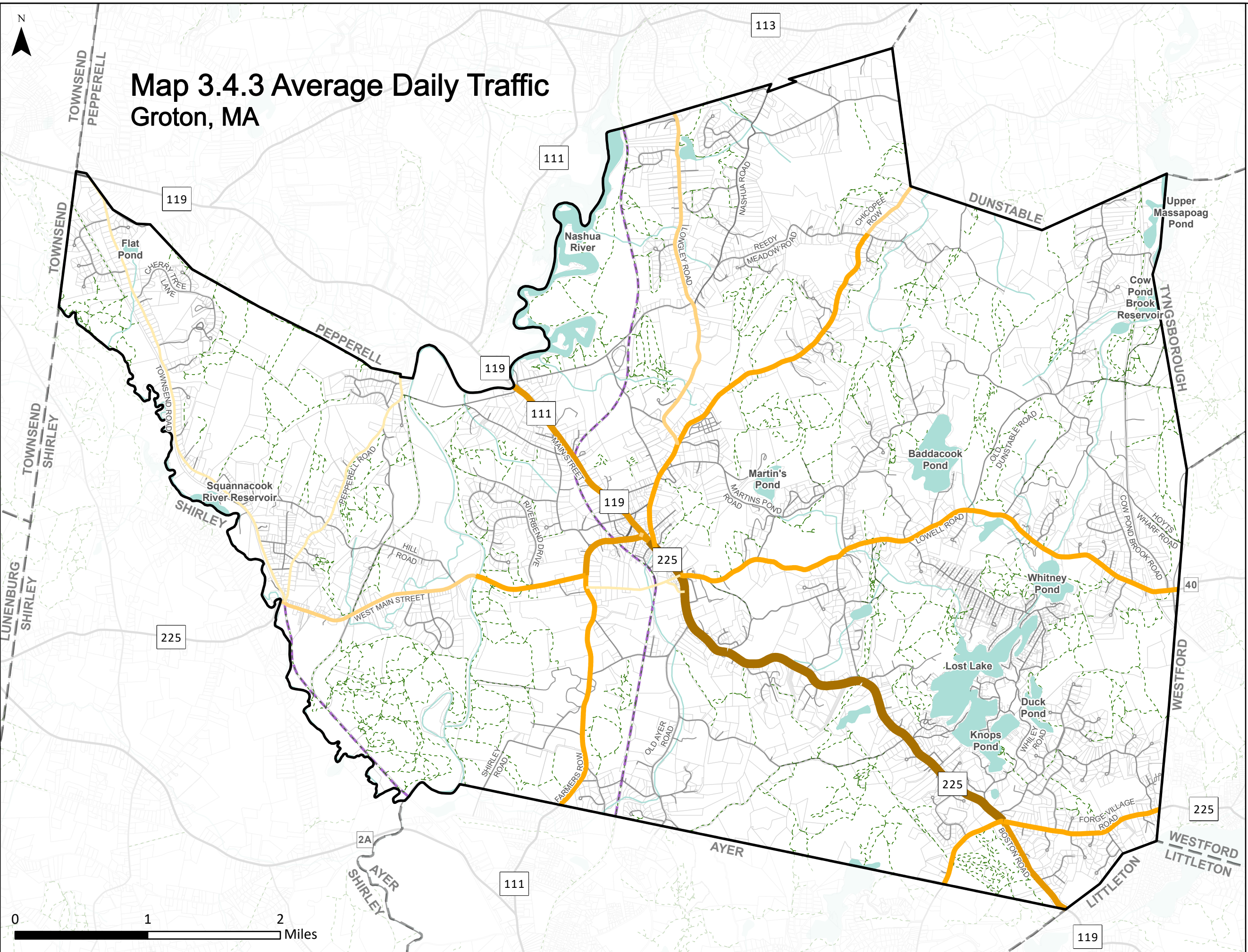


Date: May 2024  
 Source: Town of Groton, MassGIS 2024, MassDOT 2024, and U.S. Census Bureau 2021





# Map 3.4.3 Average Daily Traffic Groton, MA



**Boundaries**

- Town of Groton
- Surrounding Towns

**Water Features**

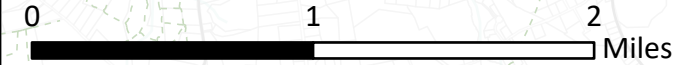
- Major Lakes and Ponds
- Major Rivers and Streams

**Trails**

- Existing Bike Paths
- Trails

**MassDOT Average Daily Traffic 2022**

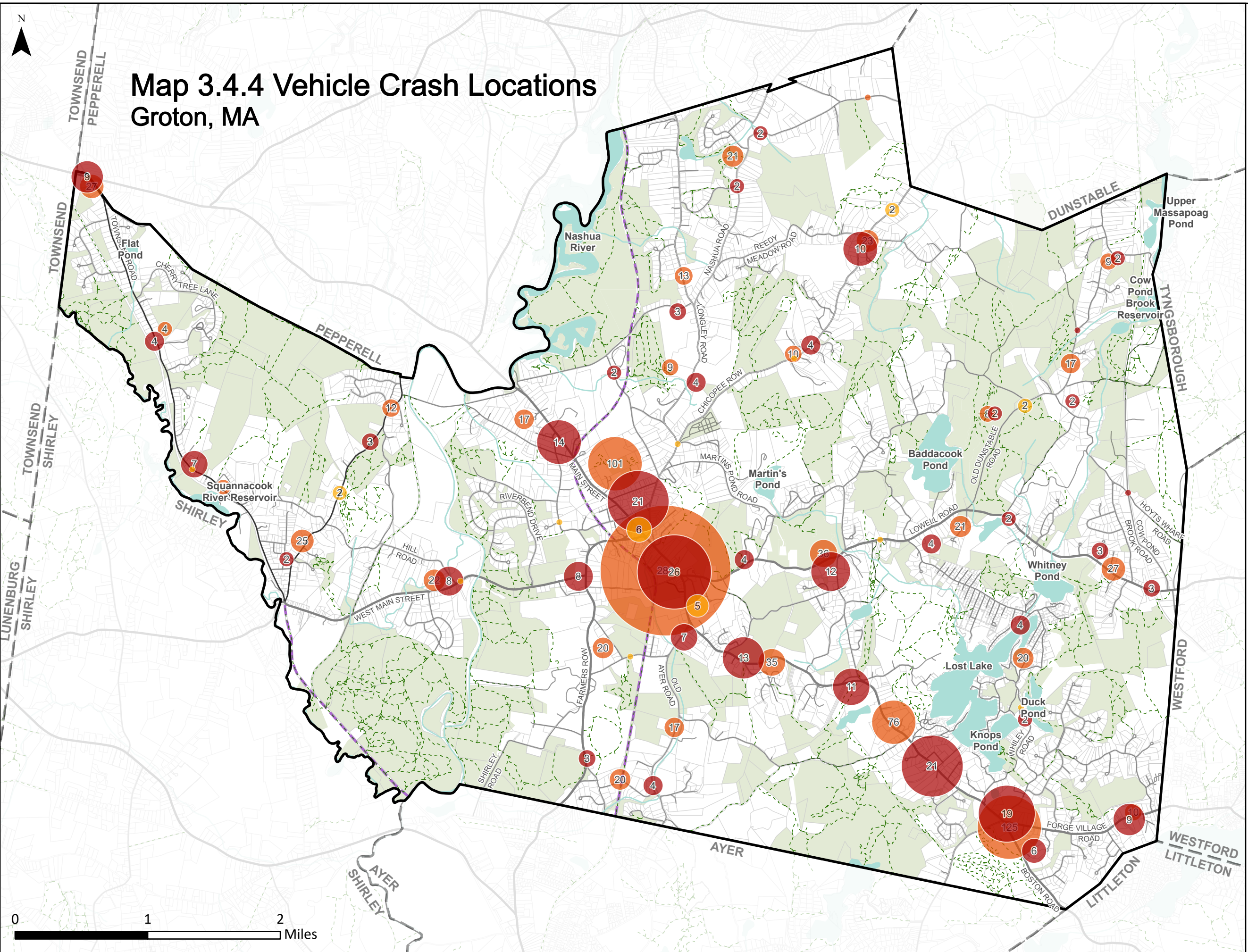
- <537
- 537 - 1,675
- 1,676 - 3,795
- 3,796 - 6,774
- 6,775 - 14,724
- 14,725 - 20,389



Date: May 2024  
 Source: Town of Groton, MassGIS 2024, MassDOT 2024, and U.S. Census Bureau 2021



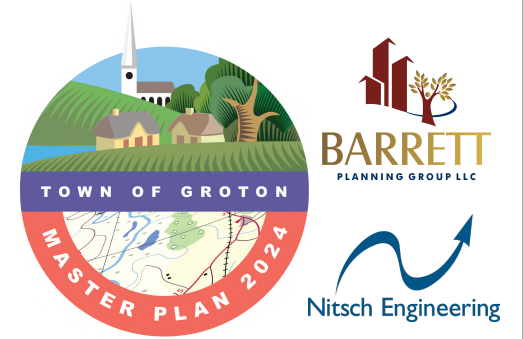
# Map 3.4.4 Vehicle Crash Locations Groton, MA



- Boundaries**
  - Town of Groton
  - Surrounding Towns
- Open Spaces**
  - Conservation and Recreation
- Water Features**
  - Major Lakes and Ponds
  - Major Rivers and Streams
- Roads**
  - Major Roads
  - Minor Roads
- Trails**
  - Existing Bike Paths
  - Trails
- Crash Severity**
  - Non-fatal injury
  - Property damage only (none injured)
  - Not Reported

0 1 2 Miles

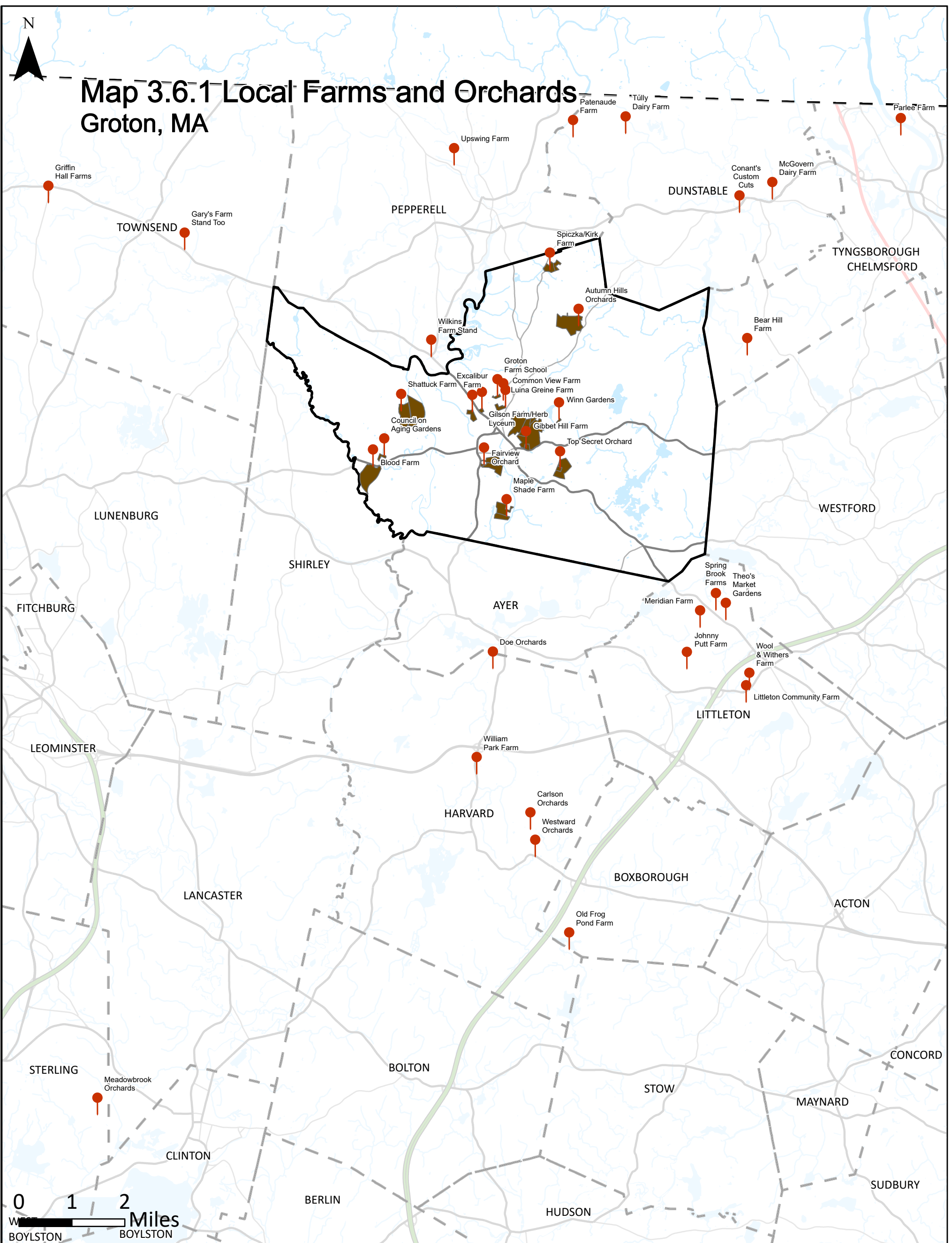
Date: May 2024  
 Source: Town of Groton, MassGIS 2024, MassDOT 2024, and U.S. Census Bureau 2021







# Map 3.6.1 Local Farms and Orchards Groton, MA

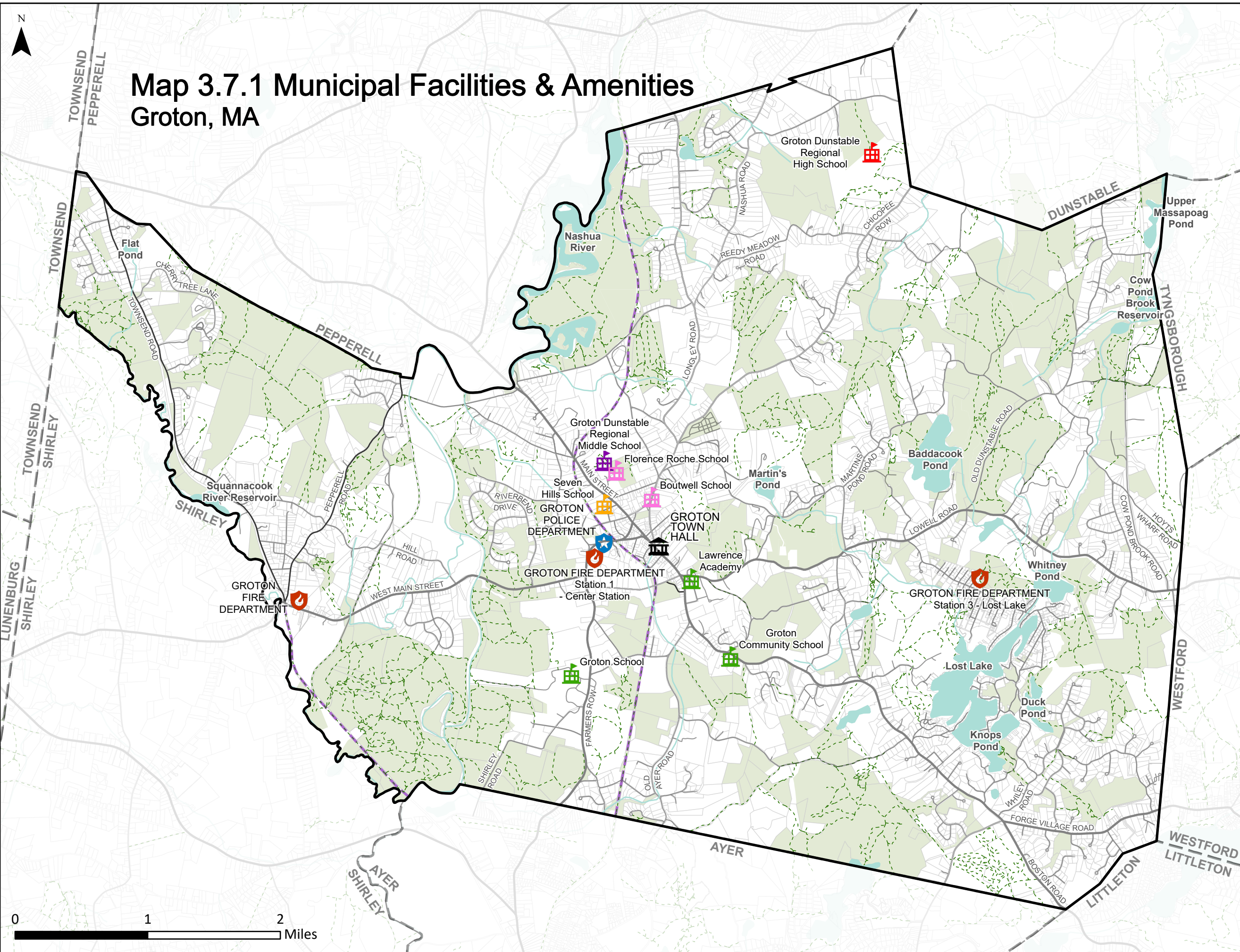


<b>Boundaries</b>	<b>Roads</b>	<b>Farms</b>
Town of Groton	Interstate	Farm Location
Surrounding Towns	U.S. Highway	Farm Land
<b>Land Use Categories</b>	State Route	
Water	Non-numbered Road	

Date: May 2024  
Source: Town of Groton, MassGIS 2022, MassDOT 2024, and U.S. Census Bureau 2021



# Map 3.7.1 Municipal Facilities & Amenities Groton, MA



- Boundaries**
  - Town of Groton
  - Surrounding Towns
- Open Spaces**
  - Conservation and Recreation
- Water Features**
  - Major Lakes and Ponds
  - Major Rivers and Streams
- Roads**
  - Major Roads
  - Minor Roads
- Trails**
  - Existing Bike Paths
  - Trails
- Townhalls**
  - Groton Town Hall
- Public Safety**
  - Local Police
  - Fire Stations
- Schools**
  - Private
  - Public Elementary
  - Public Middle
  - Public Secondary
  - Special Education

Date: May 2024  
 Source: Town of Groton, MassGIS 2024, MassDOT 2024, and U.S. Census Bureau 2021

