

July 28, 2017

Moving to Closure
Former Conductorlab Facility
Groton, MA

Honeywell

Agenda

- Building demolition
- Focused investigation in one area - to assess potential of impact to the surface water
- Continued sampling of groundwater and surface water
- Continued submittal of reports to MassDEP

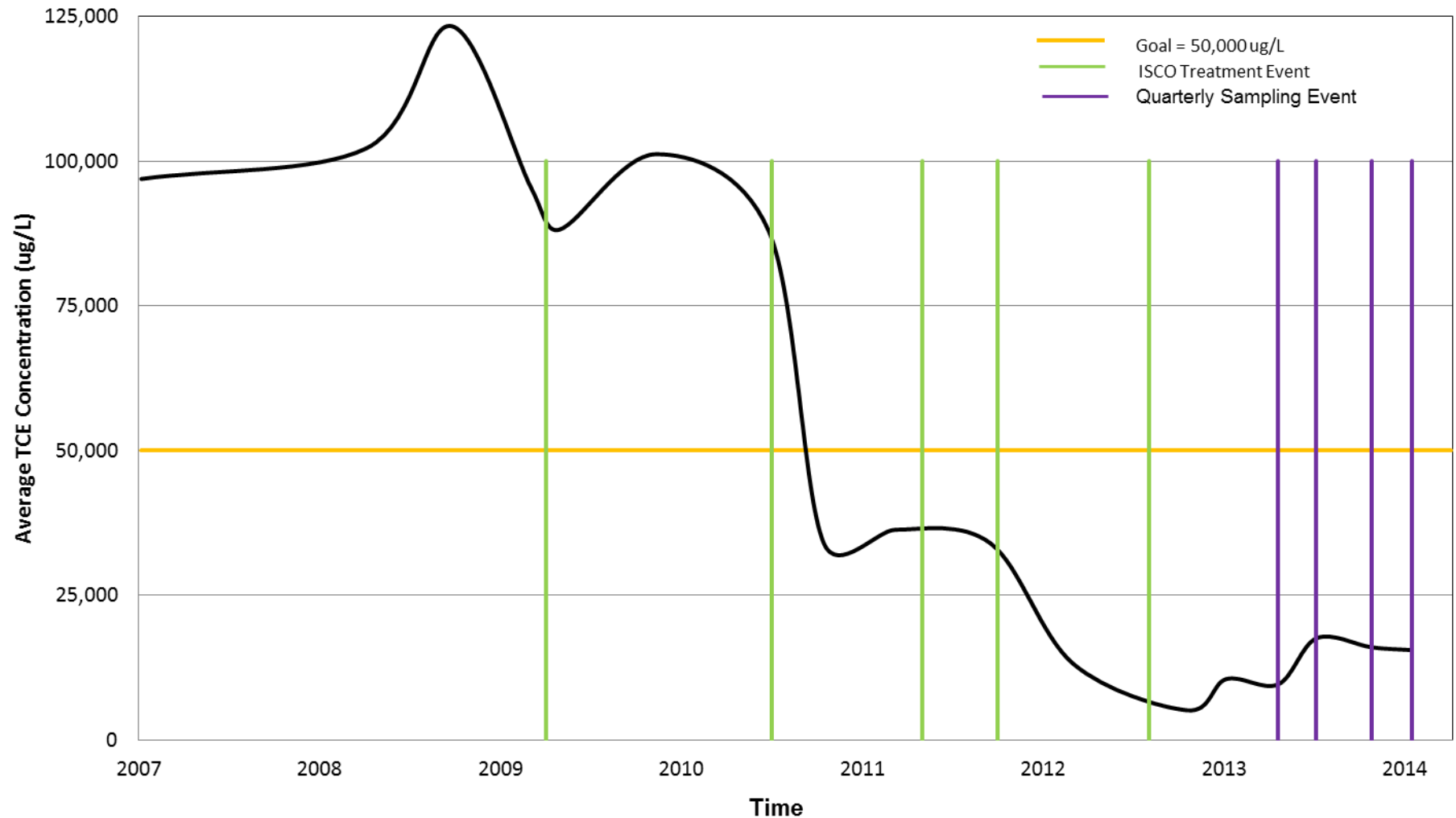
General Site Information

- Site is managed under the Massachusetts Contingency Plan (MCP) in coordination with the Massachusetts Department of Environmental Protection (MassDEP)
- Groundwater and surface water monitoring events continue
- Planning for demolition of site building is complete
 - Permit information from the Town has been requested
 - Contractor has been selected
 - Building materials sampled – not hazardous
 - Receiving facility has been contacted

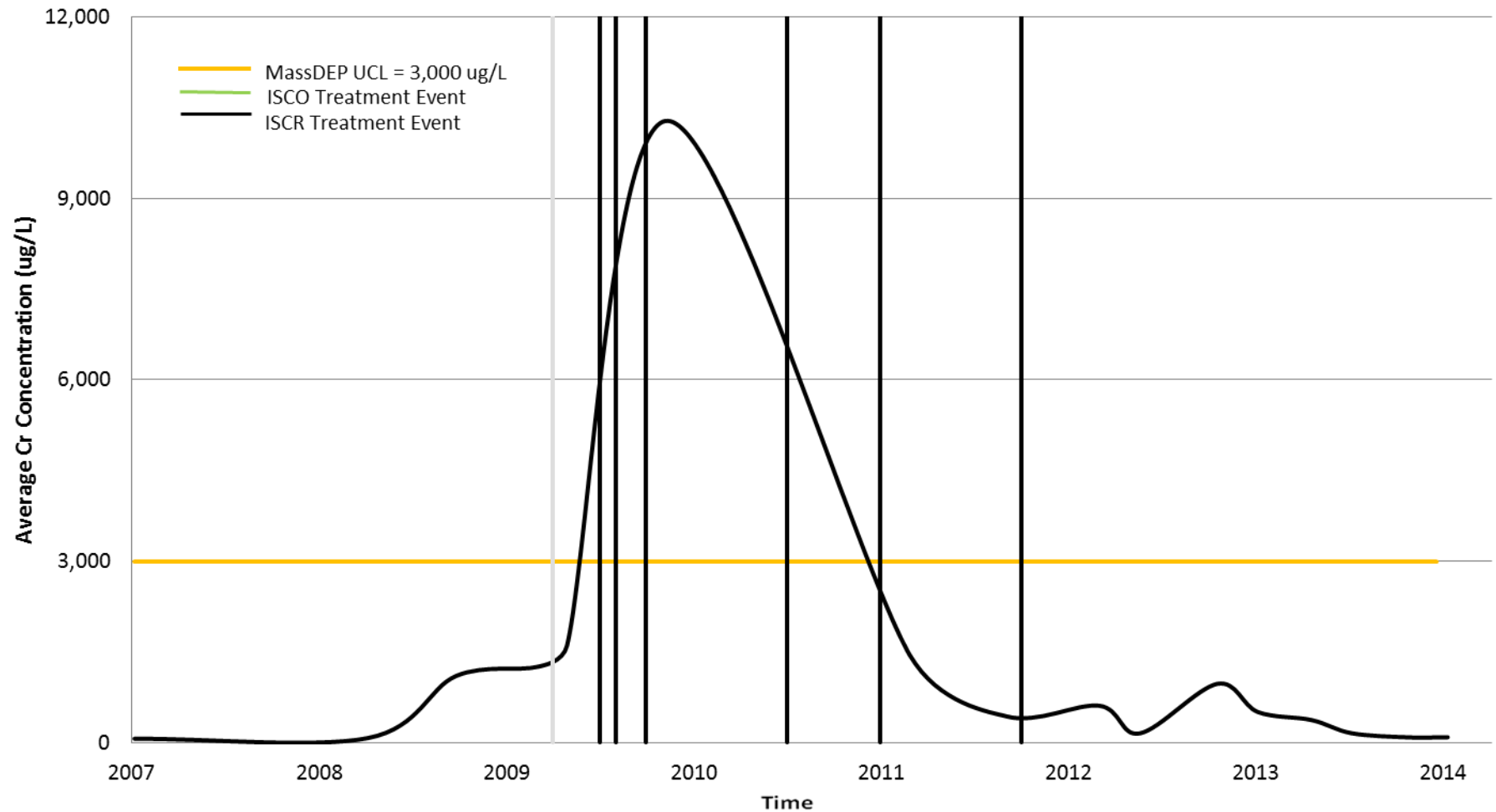
Regulatory Status

- Site is in Phase IV under MCP – Next step is closure
- Site has long and positive history with MassDEP
- Biannual reports to MassDEP have provided site status
- Cleanup goal for TCE attained (< 50 ppm) currently 14 ppm
- Cleanup goal for Cr6 attained (< 3 ppm) currently 0.5 ppm
- Goals shown to be sustained after 4 quarterly events
- On-going monitoring of groundwater and surface water for Cr and TCE

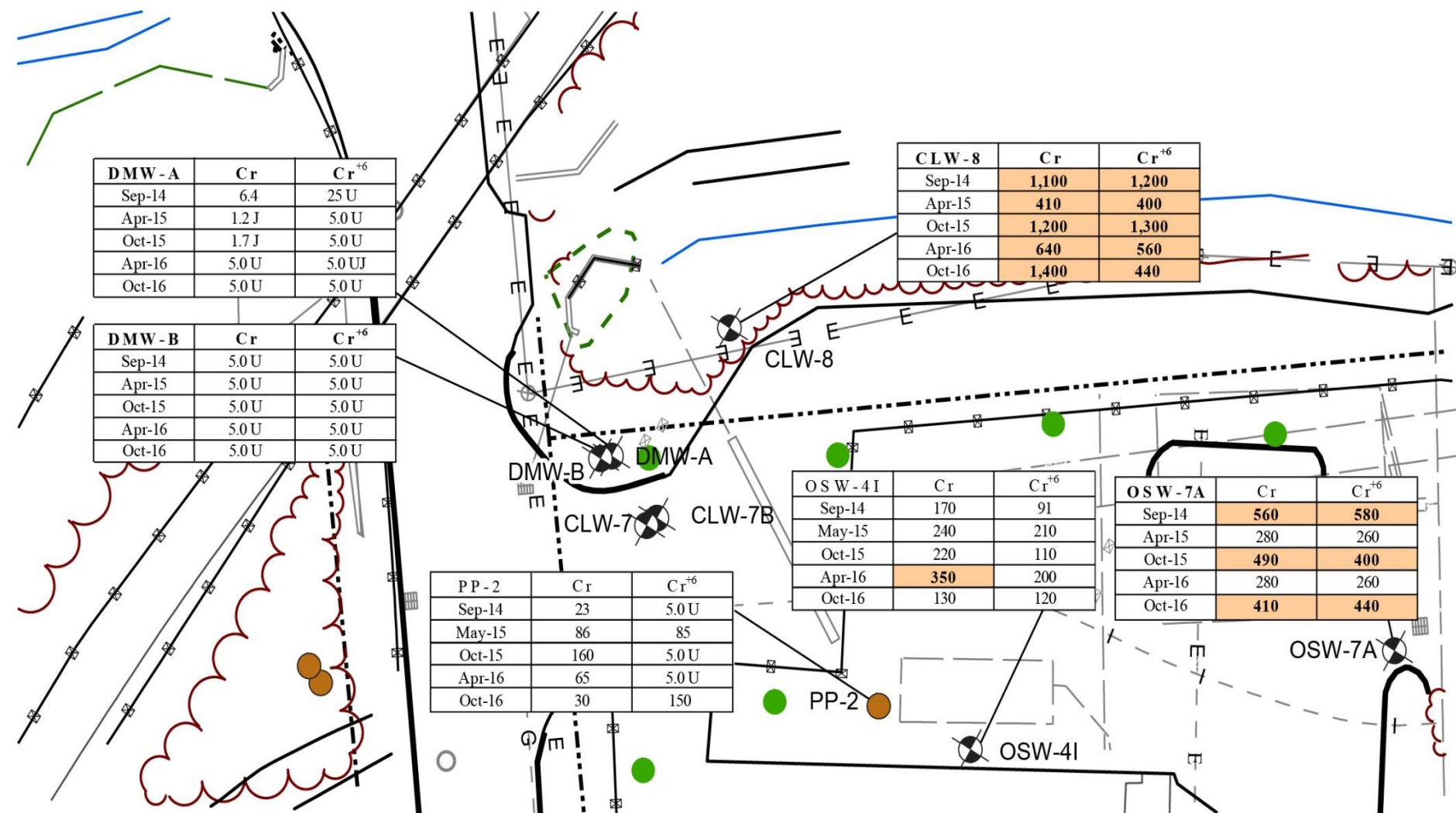
Average TCE Concentrations



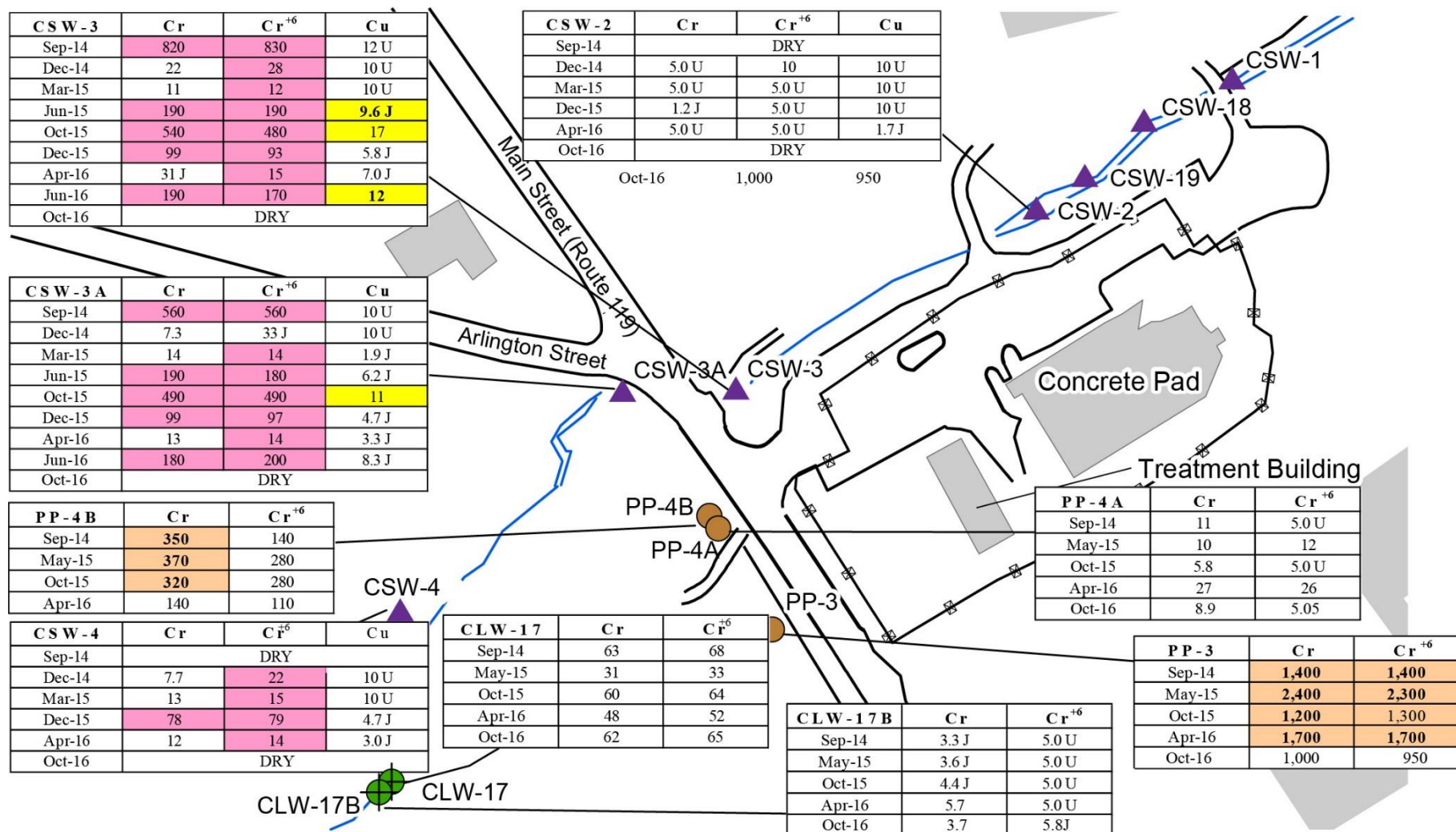
Average Chromium On-Property



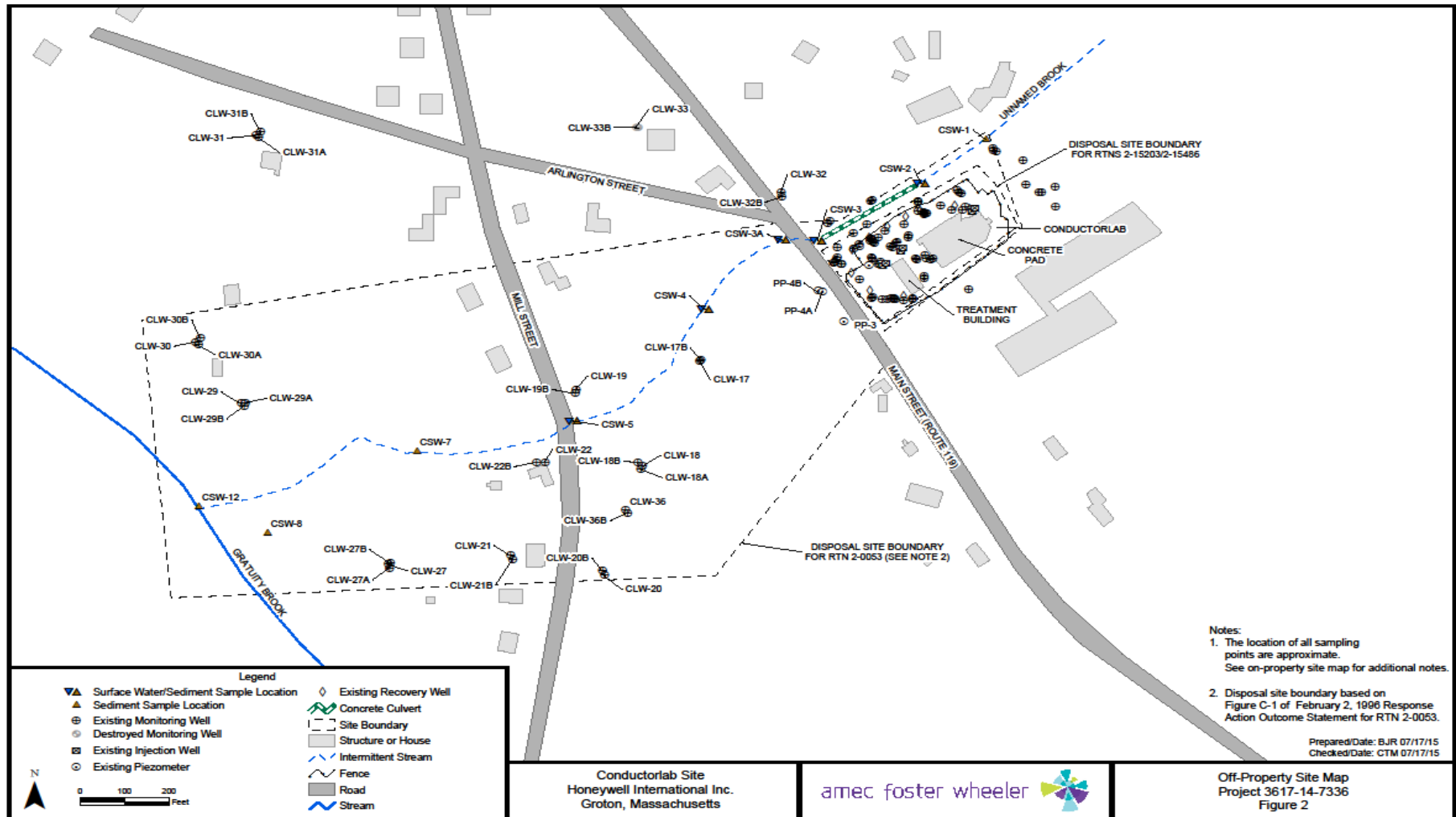
Cr Groundwater Concentrations



Off-Property Chromium Concentrations in Water



Off-Property Sampling Locations



Demolition Plans

- Renaissance Builders selected as demolition company
- Renaissance demolished a similar building in Greenfield
- Excellent safety and operation experience
- Dust control will be paramount
- Trucks will be directed westward – out of town
- Amec Foster Wheeler will be on-Site at all times

Demolition of Similar Groundwater Treatment Building



Review of Regulatory Pathway and Changes

- 2014 Massachusetts Department of Protection (MassDEP) lowers TCE value for GW-2 (from 30 ppb down to 5 ppb)
- All GW-2 wells meet regulations
- A Permanent Solution Statement with Conditions replaces Response Action Outcome (RAO)
- Upon Permanent Solution there will be a submittal to MassDEP that contamination is controlled, there is no source, and there is “no significant risk” (NSR)
- Activity and Use Limitation (AUL) – specifies Conditions (activities/uses) that are allowed/prohibited in the future
- AUL - required for all sites when Permanent Solution limits activities

2017 - 2018 Action Items

- 2017 – Surface/ground-water monitoring events, and demolition of site building
- 2017 - Continue to conduct surface water sampling and biannual groundwater sampling to assess Cr, delineation of Cr in soil may result in limited excavation of elevated chromium, if found
- 2017/2018 - Continue with Risk Assessment Activities
 - Groundwater and surface water characterization
 - Prepare report to support Permanent Solution
 -
- 2018 - Prepare Permanent Solution and AUL

Schedule

