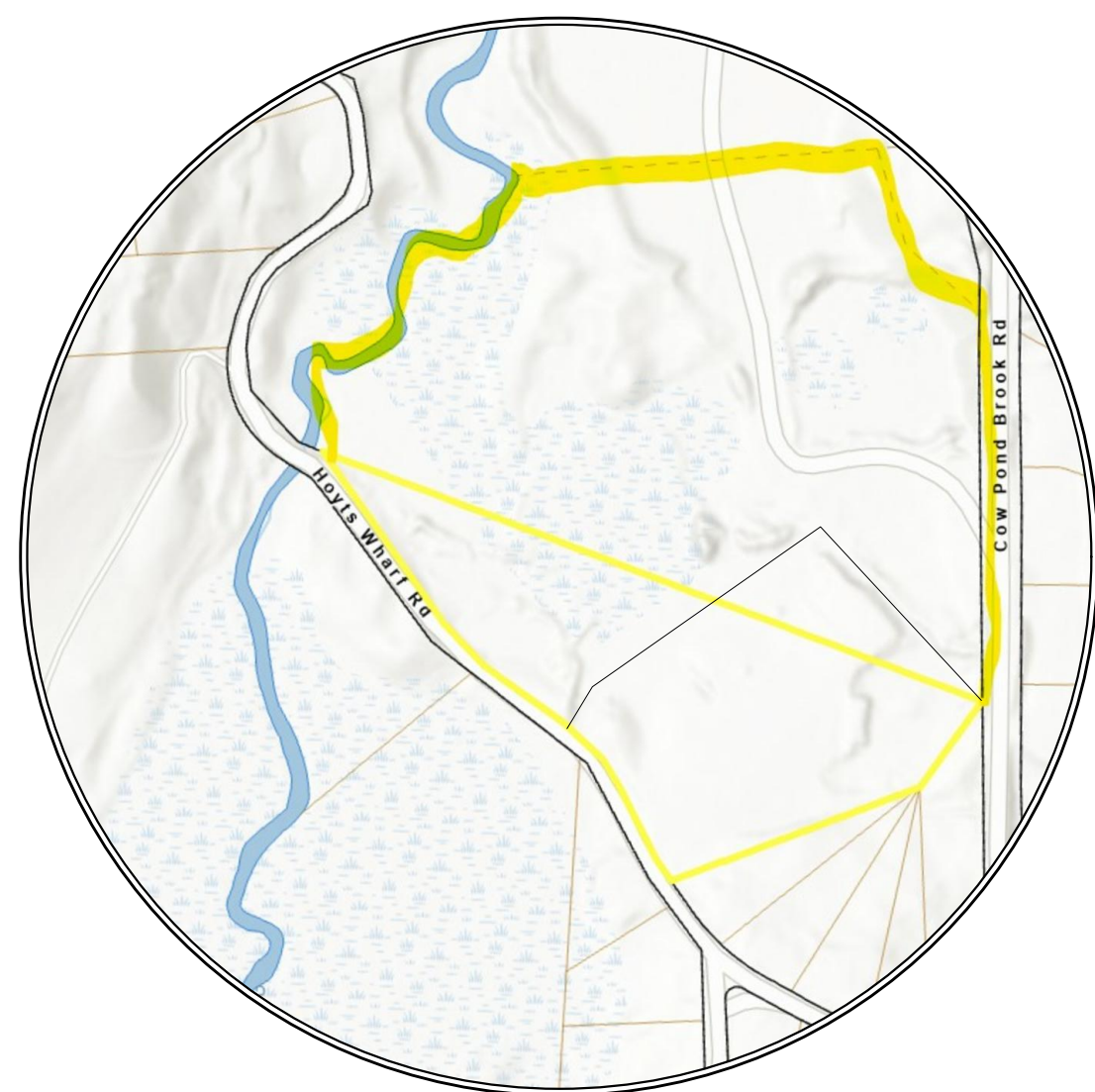
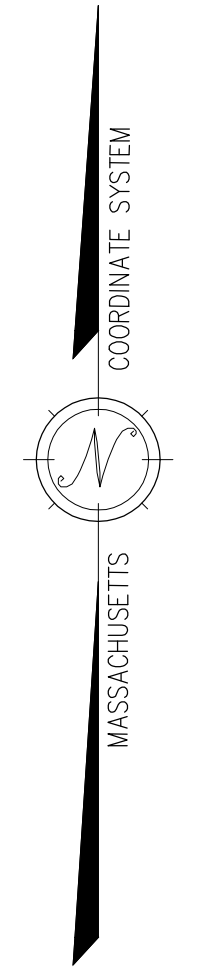
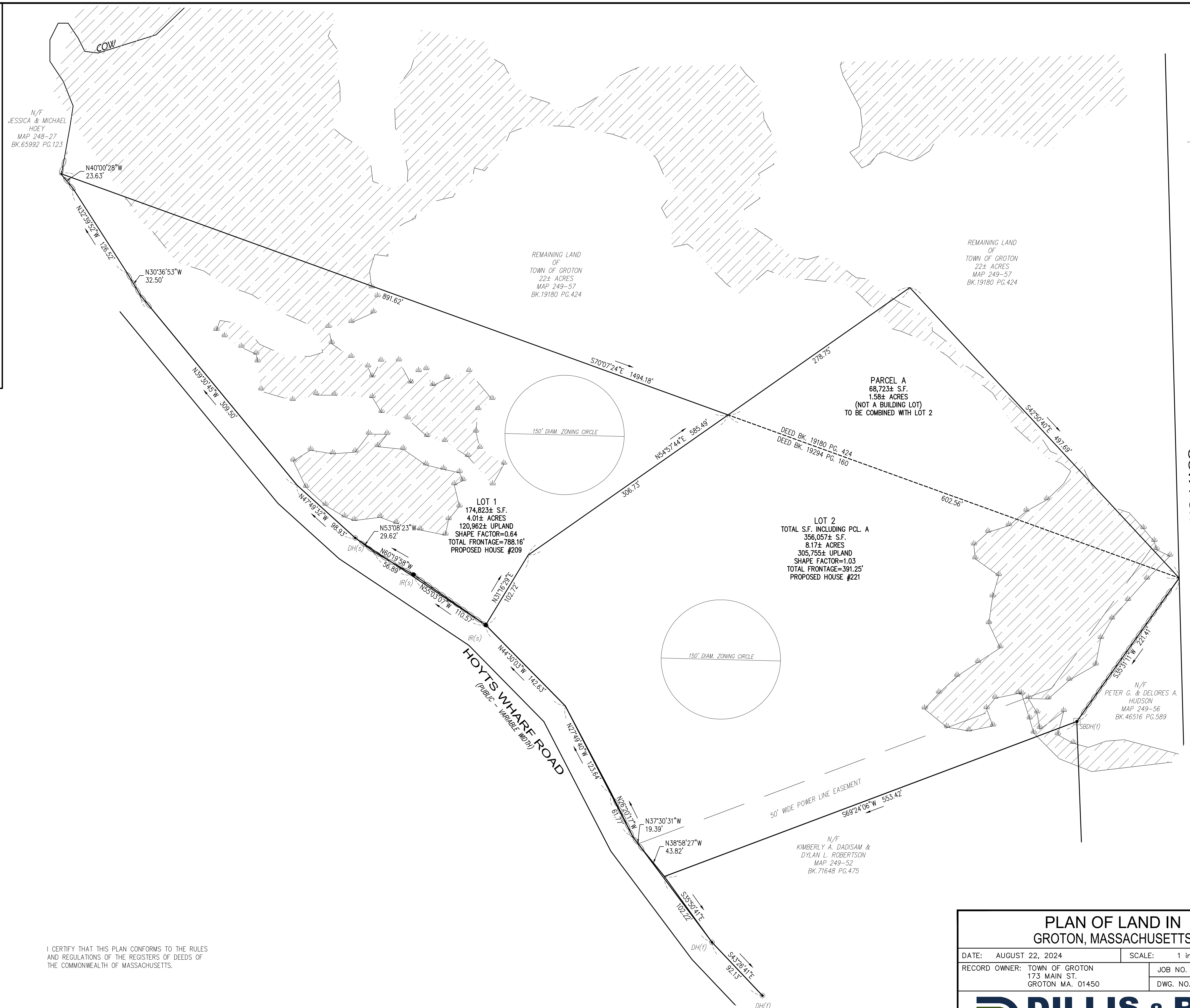


ASSESSORS SKETCH
SCALE 1" = 200'



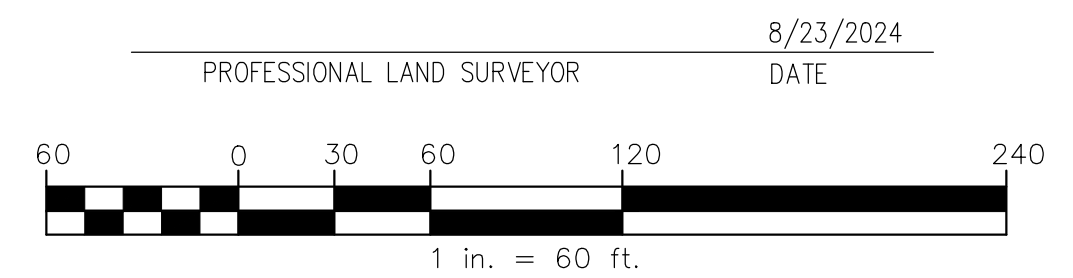
LOCUS
SCALE 1" = 1000±'



PREPARED FOR:
GROTON AFFORDABLE HOUSING TRUST
173 MAIN ST
GROTON, MA
DEED REFERENCES:
BK.19180 PG.424
BK.19294 PG.160
PLAN REFERENCES:
PLAN 1138 OF 1988
ASSESSORS MAP:249 PCL.51
ZONING DISTRICT: RA

NOTE: THE INTENT OF THIS PLAN IS TO
CREATE LOTS 1&2
THE LOTS SHOWN HEREON CONFORM TO
218-6.3 G & J & K OF THE GROTON CODE
SUCH ENDORSEMENT SHALL NOT BE DEEMED TO CONSTITUTE
ANY DETERMINATION OF COMPLIANCE WITH THE
REQUIREMENTS OF THE ZONING BYLAW

I CERTIFY THAT THIS PLAN CONFORMS TO THE RULES
AND REGULATIONS OF THE REGISTERS OF DEEDS OF
THE COMMONWEALTH OF MASSACHUSETTS.



RESERVED FOR REGISTRY USE	APPROVAL NOT REQUIRED UNDER THE SUBDIVISION CONTROL LAW GROTON PLANNING BOARD
	DATE: _____

**PLAN OF LAND IN
GROTON, MASSACHUSETTS**

DATE: AUGUST 22, 2024	SCALE: 1 in. = 60 ft.
RECORD OWNER: TOWN OF GROTON 173 MAIN ST. GROTON MA. 01450	JOB NO. 7027 DWG. NO. 7027-ANR

DILLIS & ROY
CIVIL DESIGN GROUP

CIVIL ENGINEERS LAND SURVEYORS WETLAND CONSULTANTS

CORPORATE OFFICE:
1 MAIN STREET, SUITE 1 978-779-6091 100 MAIN ST., SUITE 310
LUNENBURG, MA 01462 www.dillissandroy.com CONCORD, MA 01742

SHEET 1 OF 1